

For Research Use Only

# APOE Recombinant antibody

Catalog Number: 84775-6-RR



## Basic Information

Catalog Number:

84775-6-RR

Size:

100ul, Concentration: 1000 ug/ml by Nanodrop;

Source:

Rabbit

Isotype:

IgG

GenBank Accession Number:

BC003557

GeneID (NCBI):

348

UNIPROT ID:

P02649

Full Name:

Apolipoprotein E

Calculated MW:

36 kDa

Observed MW:

34-38 kDa

Purification Method:

Protein A purification

CloneNo.:

242310B3

Recommended Dilutions:

WB 1:2000-1:10000

## Applications

Tested Applications:

WB, FC (Intra), ELISA

Species Specificity:

human

Positive Controls:

WB : HepG2 cells, HuH-7 cells, human placenta

## Background Information

The apolipoprotein E (APOE) is a 299-amino acid polypeptide that mediates the binding, internalization, and catabolism of lipoprotein particles, and also serves as a ligand for the LDL (apo B/E) receptor and for the specific apo-E receptor (chylomicron remnant) of hepatic tissues. The very strong association of the APOE  $\epsilon 4$  allele with AD risk and its role in the accumulation of amyloid  $\beta$  in brains of people and animal models solidify the biological relevance of APOE isoforms but do not provide mechanistic insight (PMID: 9831633).

## Storage

Storage:

Store at  $-20^{\circ}\text{C}$ . Stable for one year after shipment.

Storage Buffer:

PBS with 0.02% sodium azide and 50% glycerol pH 7.3.

Aliquoting is unnecessary for  $-20^{\circ}\text{C}$  storage

\*\*\* 20ul sizes contain 0.1% BSA

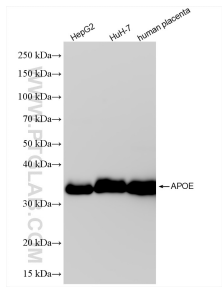
For technical support and original validation data for this product please contact:

T: 1 (888) 4PTGLAB (1-888-478-4522) (toll free in USA), or 1(312) 455-8498 (outside USA)

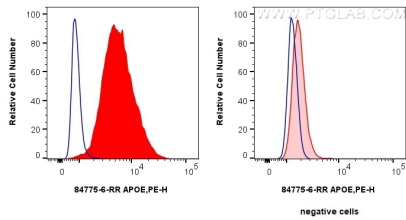
E: [proteintech@ptglab.com](mailto:proteintech@ptglab.com)  
W: [ptglab.com](http://ptglab.com)

This product is exclusively available under Proteintech Group brand and is not available to purchase from any other manufacturer.

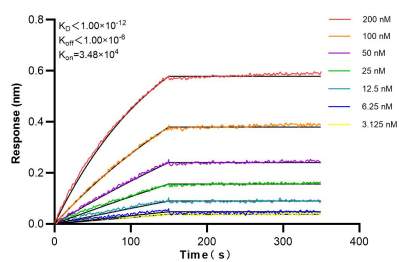
Selected Validation Data



Various lysates were subjected to SDS PAGE followed by western blot with 84775-6-RR (APOE antibody) at dilution of 1:5000 incubated at room temperature for 1.5 hours.



1x10<sup>6</sup> HepG2 cells were intracellularly stained with 0.25 ug APOE Recombinant antibody (84775-6-RR, Clone:242310B3) and PE-Conjugated Goat Anti-Rabbit IgG(H+L)(red), or 0.25 ug Rabbit IgG Isotype Control RecAb (98136-1-RR, Clone: 240953C9) (blue). Cells were fixed with 4% PFA and permeabilized with Flow Cytometry Perm Buffer (PF00011-C).



Biolayer interferometry (BLI) kinetic assays of 84775-6-RR against Human APOE were performed. The affinity constant is below 1 pM.