

For Research Use Only

# RAB21 Recombinant antibody, PBS Only (Detector)

Catalog Number: 84776-2-PBS



## Basic Information

<b>Catalog Number:</b> 84776-2-PBS	<b>GenBank Accession Number:</b> NM_014999	<b>Purification Method:</b> Protein A purification
<b>Size:</b> 100ug , Concentration: 1 mg/ml by Nanodrop;	<b>GeneID (NCBI):</b> 23011	<b>CloneNo.:</b> 242117C4
<b>Source:</b> Rabbit	<b>UNIPROT ID:</b> Q9UL25	
<b>Isotype:</b> IgG	<b>Full Name:</b> RAB21, member RAS oncogene family	
<b>Immunogen Catalog Number:</b> AG35291	<b>Calculated MW:</b> 24 kDa	
	<b>Observed MW:</b> 24 kDa	

## Applications

**Tested Applications:**  
WB, IHC, IF/ICC, Cytometric bead array, Indirect ELISA

**Species Specificity:**  
human, mouse, rat

## Product Information

84776-2-PBS targets RAB21 as part of a matched antibody pair:

MP01552-2: 84776-1-PBS capture and 84776-2-PBS detection (validated in Cytometric bead array)

Unconjugated rabbit recombinant monoclonal antibody in PBS only (BSA and azide free) storage buffer at a concentration of 1 mg/mL, ready for conjugation. Created using Proteintech's proprietary in-house recombinant technology. Recombinant production enables unrivalled batch-to-batch consistency, easy scale-up, and future security of supply.

This conjugation ready format makes antibodies ideal for use in many applications including: ELISAs, multiplex assays requiring matched pairs, mass cytometry, and multiplex imaging applications. Antibody use should be optimized by the end user for each application and assay.

## Background Information

Small GTPase Rab21 is a ubiquitously expressed and has recently been shown to associate with the  $\alpha$  tails of several integrins via the shared conserved membrane proximal sequence, thus regulating cell adhesion and migration via controlling the endo/exocytic trafficking of most integrin heterodimers (PMID: 18804435). Rab21 is required for the pruning of the immature neurites during the multipolar-to-bipolar transition (PMID: 36683567). Knock down of Rab21 impairs integrin-mediated cell adhesion and motility, whereas its overexpression stimulates cell migration and cancer cell adhesion to collagen and human bone (PMID: 16754960).

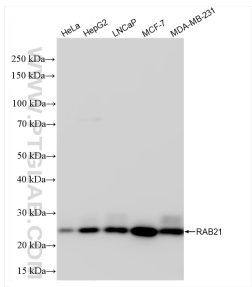
## Storage

**Storage:**  
Store at -80°C.  
**Storage Buffer:**  
PBS Only

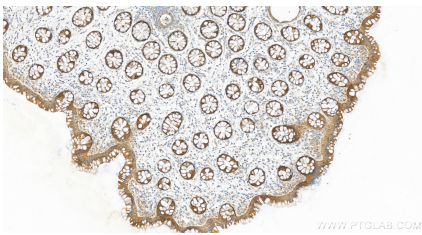
For technical support and original validation data for this product please contact:  
T: 1 (888) 4PTGLAB (1-888-478-4522) (toll free in USA), or 1(312) 455-8498 (outside USA)  
E: proteintech@ptglab.com  
W: ptglab.com

This product is exclusively available under Proteintech Group brand and is not available to purchase from any other manufacturer.

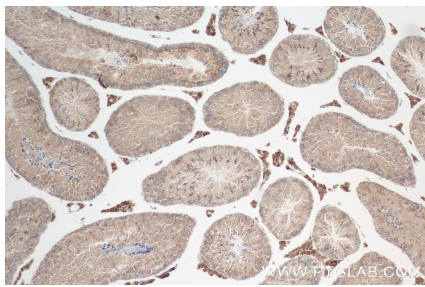
Selected Validation Data



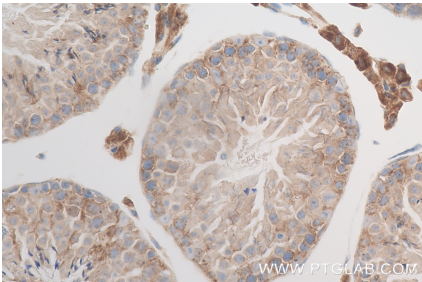
Various lysates were subjected to SDS PAGE followed by western blot with 84776-2-RR (RAB21 antibody) at dilution of 1:2000 incubated at room temperature for 1.5 hours. This data was developed using the same antibody clone with 84776-2-PBS in a different storage buffer formulation.



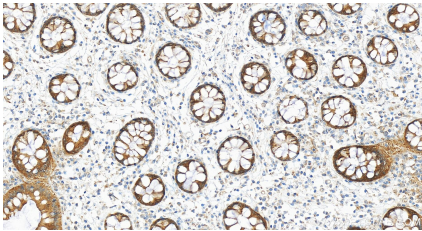
Immunohistochemical analysis of paraffin-embedded human colon tissue slide using 84776-2-RR (RAB21 antibody) at dilution of 1:400 (under 10x lens). Heat mediated antigen retrieval with Tris-EDTA buffer (pH 9.0). This data was developed using the same antibody clone with 84776-2-PBS in a different storage buffer formulation.



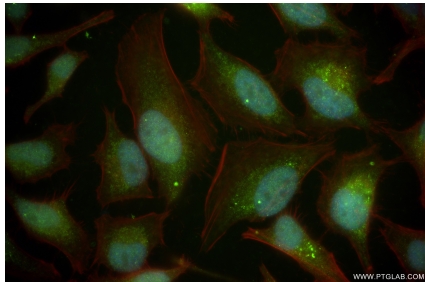
Immunohistochemical analysis of paraffin-embedded mouse testis tissue slide using 84776-2-RR (RAB21 antibody) at dilution of 1:400 (under 10x lens). Heat mediated antigen retrieval with Tris-EDTA buffer (pH 9.0). This data was developed using the same antibody clone with 84776-2-PBS in a different storage buffer formulation.



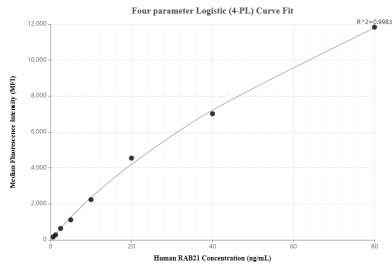
Immunohistochemical analysis of paraffin-embedded mouse testis tissue slide using 84776-2-RR (RAB21 antibody) at dilution of 1:400 (under 40x lens). Heat mediated antigen retrieval with Tris-EDTA buffer (pH 9.0). This data was developed using the same antibody clone with 84776-2-PBS in a different storage buffer formulation.



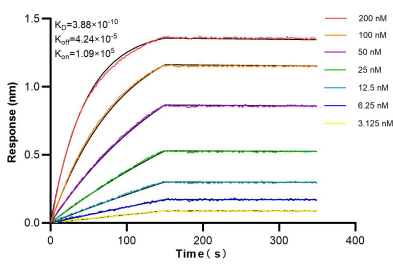
Immunohistochemical analysis of paraffin-embedded human colon tissue slide using 84776-2-RR (RAB21 antibody) at dilution of 1:400 (under 20x lens). Heat mediated antigen retrieval with Tris-EDTA buffer (pH 9.0). This data was developed using the same antibody clone with 84776-2-PBS in a different storage buffer formulation.



Immunofluorescent analysis of (4% PFA) fixed HeLa cells using RAB21 antibody (84776-2-RR, Clone: 242117C4 ) at dilution of 1:250 and CoraLite@488-Conjugated Goat Anti-Rabbit IgG(H+L) (SA00013-2), CL594-Phalloidin (red). This data was developed using the same antibody clone with 84776-2-PBS in a different storage buffer formulation.



Cytometric bead array standard curve of MP01552-2, RAB21 Recombinant Matched Antibody Pair, PBS Only. Capture antibody: 84776-1-PBS. Detection antibody: 84776-2-PBS. Standard: Ag35291. Range: 0.625-80 ng/mL



Biolayer interferometry (BLI) kinetic assays of 84776-2-RR against Human RAB21 were performed. The affinity constant is 0.388 nM.