

For Research Use Only

LRRFIP1 Recombinant antibody, PBS Only (Detector)

Catalog Number: 84778-2-PBS



Basic Information

Catalog Number: 84778-2-PBS	GenBank Accession Number: BC108914	Purification Method: Protein A purification
Size: 100ug , Concentration: 1 mg/ml by Nanodrop;	GeneID (NCBI): 9208	CloneNo.: 242161F10
Source: Rabbit	UNIPROT ID: Q32MZ4	
Isotype: IgG	Full Name: leucine rich repeat (in FLII) interacting protein 1	
Immunogen Catalog Number: AG34760	Observed MW: 150-170 kDa	

Applications

Tested Applications:
WB, Cytometric bead array, Sandwich ELISA, Indirect ELISA, Sample test

Species Specificity:
human

Product Information

84778-2-PBS targets LRRFIP1 as part of a matched antibody pair:

MP01600-1: 84778-1-PBS capture and 84778-2-PBS detection (validated in Cytometric bead array, Sandwich ELISA)

MP01600-2: 84778-3-PBS capture and 84778-2-PBS detection (validated in Cytometric bead array)

Unconjugated rabbit recombinant monoclonal antibody in PBS only (BSA and azide free) storage buffer at a concentration of 1 mg/mL, ready for conjugation. Created using Proteintech's proprietary in-house recombinant technology. Recombinant production enables unrivalled batch-to-batch consistency, easy scale-up, and future security of supply.

This conjugation ready format makes antibodies ideal for use in many applications including: ELISAs, multiplex assays requiring matched pairs, mass cytometry, and multiplex imaging applications. Antibody use should be optimized by the end user for each application and assay.

Background Information

LRRFIP1 is a transcriptional repressor which preferentially binds to the GC-rich consensus sequence (5'-AGCCCCGGCG-3') and may regulate expression of TNF, EGFR and PDGFA. The endogenous LRRFIP1/GCF2 proteins in several human cell lines, the one expressed from LRRFIP1/GCF2 cDNA in reticulolysates, and the recombinant LRRFIP1/GCF2 protein produced in bacteria have migrated as a band with a molecular weight (MW) of 160 kDa in sodium dodecyl sulfate-polyacrylamide gel electrophoresis (SDS-PAGE).

Storage

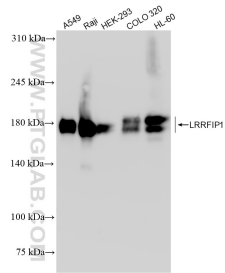
Storage:
Store at -80°C.

Storage Buffer:
PBS Only

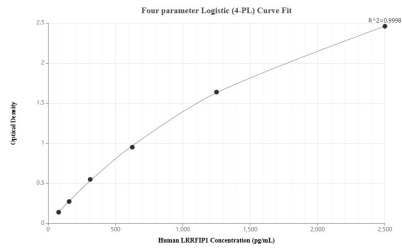
For technical support and original validation data for this product please contact:
T: 1 (888) 4PTGLAB (1-888-478-4522) (toll free in USA), or 1(312) 455-8498 (outside USA)
E: proteintech@ptglab.com
W: ptglab.com

This product is exclusively available under Proteintech Group brand and is not available to purchase from any other manufacturer.

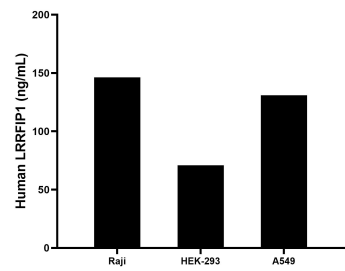
Selected Validation Data



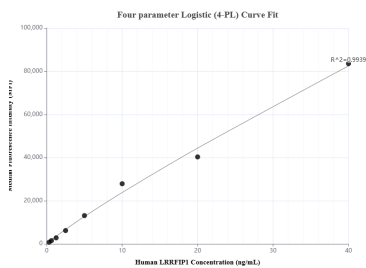
Various lysates were subjected to SDS PAGE followed by western blot with 84778-2-RR (LRRFIP1 antibody) at dilution of 1:10000 incubated at room temperature for 1.5 hours. This data was developed using the same antibody clone with 84778-2-PBS in a different storage buffer formulation.



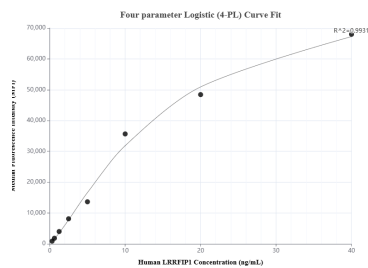
Sandwich ELISA standard curve of MP01600-1, Human LRRFIP1 Recombinant Matched Antibody Pair - PBS only. 84778-1-PBS was coated to a plate as the capture antibody and incubated with serial dilutions of standard Ag34760. 84778-2-PBS was HRP conjugated as the detection antibody. Range: 78.1-2500 pg/mL



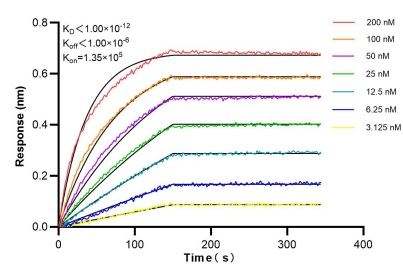
The mean LRRFIP1 concentration was determined to be 146.23 ng/mL in Raji cell extract based on a 1.4 mg/mL extract load, 70.95 ng/mL in HEK-293 cell extract based on a 1.2 mg/mL extract load and 131.01 ng/mL in A549 cell extract based on a 2.5 mg/mL extract load.



Cytometric bead array standard curve of MP01600-1, LRRFIP1 Recombinant Matched Antibody Pair, PBS Only. Capture antibody: 84778-1-PBS. Detection antibody: 84778-2-PBS. Standard: Ag34760. Range: 0.313-40 ng/mL.



Cytometric bead array standard curve of MP01600-2, LRRFIP1 Recombinant Matched Antibody Pair, PBS Only. Capture antibody: 84778-3-PBS. Detection antibody: 84778-2-PBS. Standard: Ag34760. Range: 0.313-40 ng/mL.



Bi-layer interferometry (BLI) kinetic assays of 84778-2-RR against Human LRRFIP1 were performed. The affinity constant is below 1 pM.