

For Research Use Only

LRRFIP1 Recombinant antibody

Catalog Number: 84778-2-RR



Basic Information

Catalog Number: 84778-2-RR	GenBank Accession Number: BC108914	Purification Method: Protein A purification
Size: 100ul , Concentration: 1000 µg/ml by Nanodrop;	GeneID (NCBI): 9208	CloneNo.: 242161F10
Source: Rabbit	UNIPROT ID: Q32MZ4	Recommended Dilutions: WB 1:5000-1:50000
Isotype: IgG	Full Name: leucine rich repeat (in FLII) interacting protein 1	
Immunogen Catalog Number: AG34760	Observed MW: 150-170 kDa	

Applications

Tested Applications: WB, ELISA	Positive Controls: WB : A549 cells, Raji cells, HEK-293 cells, COLO 320 cells, HL-60 cells
Species Specificity: human	

Background Information

LRRFIP1 is a transcriptional repressor which preferentially binds to the GC-rich consensus sequence (5'-AGCCCCGGCG-3') and may regulate expression of TNF, EGFR and PDGFA. The endogenous LRRFIP1/GCF2 proteins in several human cell lines, the one expressed from LRRFIP1/GCF2 cDNA in reticulolysates, and the recombinant LRRFIP1/GCF2 protein produced in bacteria have migrated as a band with a molecular weight (MW) of 160 kda in sodium dodecyl sulfate-polyacrylamide gel electrophoresis (SDS-PAGE).

Storage

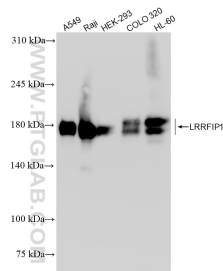
Storage:
Store at -20°C. Stable for one year after shipment.
Storage Buffer:
PBS with 0.02% sodium azide and 50% glycerol pH 7.3.
Aliquoting is unnecessary for -20°C storage

*** 20ul sizes contain 0.1% BSA

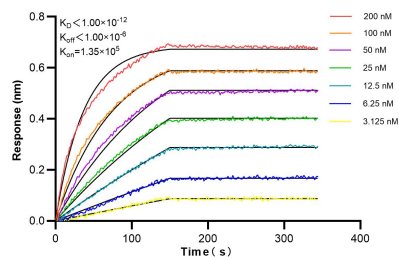
For technical support and original validation data for this product please contact:
T: 1 (888) 4PTGLAB (1-888-478-4522) (toll free in USA), or 1(312) 455-8498 (outside USA)
E: proteintech@ptglab.com
W: ptglab.com

This product is exclusively available under Proteintech Group brand and is not available to purchase from any other manufacturer.

Selected Validation Data



Various lysates were subjected to SDS PAGE followed by western blot with 84778-2-RR (LRRFIP1 antibody) at dilution of 1:10000 incubated at room temperature for 1.5 hours.



Biolayer interferometry (BLI) kinetic assays of 84778-2-RR against Human LRRFIP1 were performed. The affinity constant is below 1 pM.