

For Research Use Only

MDM2 Recombinant antibody, PBS Only (Capture)

Catalog Number: 84780-5-PBS



Basic Information

| | | |
|---|---|---|
| Catalog Number: 84780-5-PBS | GenBank Accession Number: NM_001145337.2 | Purification Method: Protein A purification |
| Size: 100ug , Concentration: 1 mg/ml by Nanodrop; | GeneID (NCBI): 4193 | CloneNo.: 242080C8 |
| Source: Rabbit | UNIPROT ID: Q00987 | |
| Isotype: IgG | Full Name: Mdm2 p53 binding protein homolog (mouse) | |
| Immunogen Catalog Number: AG27255 | Calculated MW: 55 kDa | |

Applications

Tested Applications:
Sandwich ELISA, Indirect ELISA, Sample test

Species Specificity:
human

Product Information

84780-5-PBS targets MDM2 as part of a matched antibody pair:

MP01554-3: 84780-5-PBS capture and 84780-4-PBS detection (validated in Sandwich ELISA)

Unconjugated rabbit recombinant monoclonal antibody in PBS only (BSA and azide free) storage buffer at a concentration of 1 mg/mL, ready for conjugation. Created using Proteintech's proprietary in-house recombinant technology. Recombinant production enables unrivalled batch-to-batch consistency, easy scale-up, and future security of supply.

This conjugation ready format makes antibodies ideal for use in many applications including: ELISAs, multiplex assays requiring matched pairs, mass cytometry, and multiplex imaging applications. Antibody use should be optimized by the end user for each application and assay.

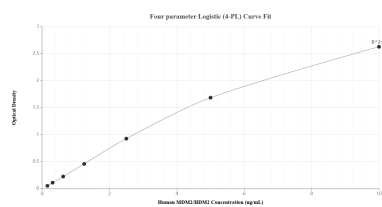
Storage

Storage:
Store at -80°C.
Storage Buffer:
PBS Only

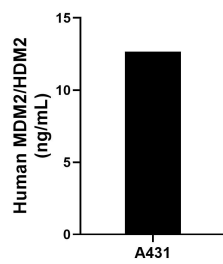
For technical support and original validation data for this product please contact:
T: 1 (888) 4PTGLAB (1-888-478-4522) (toll free in USA), or 1(312) 455-8498 (outside USA)
E: proteintech@ptglab.com
W: ptglab.com

This product is exclusively available under Proteintech Group brand and is not available to purchase from any other manufacturer.

Selected Validation Data



Sandwich ELISA standard curve of MP01554-3, Human MDM2/HDM2 Recombinant Matched Antibody Pair - PBS only. 84780-5-PBS was coated to a plate as the capture antibody and incubated with serial dilutions of standard Ag27255. 84780-4-PBS was HRP conjugated as the detection antibody. Range: 0.156-10 ng/mL



The mean MDM2/HDM2 concentration was determined to be 12.67 ng/mL in A431 cell extract based on a 1.30 mg/mL extract load.