

For Research Use Only

# TNFRSF10B Recombinant antibody, PBS Only (Detector)

Catalog Number: 84784-1-PBS



## Basic Information

<b>Catalog Number:</b> 84784-1-PBS	<b>GenBank Accession Number:</b> BC001281	<b>Purification Method:</b> Protein A purification
<b>Size:</b> 100ug, Concentration: 1 mg/ml by Nanodrop;	<b>GeneID (NCBI):</b> 8795	<b>CloneNo.:</b> 242319B12
<b>Source:</b> Rabbit	<b>UNIPROT ID:</b> O14763	
<b>Isotype:</b> IgG	<b>Full Name:</b> tumor necrosis factor receptor superfamily, member 10b	
	<b>Calculated MW:</b> 48 kDa	

## Applications

**Tested Applications:**  
Cytometric bead array, Sandwich ELISA, Indirect ELISA, Sample test

**Species Specificity:**  
human

## Product Information

84784-1-PBS targets TNFRSF10B as part of a matched antibody pair:

MP01541-1: 84784-3-PBS capture and 84784-1-PBS detection (validated in Cytometric bead array, Sandwich ELISA)

MP01541-2: 84784-2-PBS capture and 84784-1-PBS detection (validated in Cytometric bead array)

Unconjugated rabbit recombinant monoclonal antibody in PBS only (BSA and azide free) storage buffer at a concentration of 1 mg/mL, ready for conjugation. Created using Proteintech's proprietary in-house recombinant technology. Recombinant production enables unrivalled batch-to-batch consistency, easy scale-up, and future security of supply.

This conjugation ready format makes antibodies ideal for use in many applications including: ELISAs, multiplex assays requiring matched pairs, mass cytometry, and multiplex imaging applications. Antibody use should be optimized by the end user for each application and assay.

## Storage

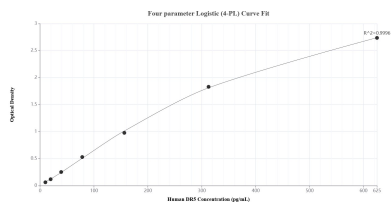
**Storage:**  
Store at -80°C.

**Storage Buffer:**  
PBS Only

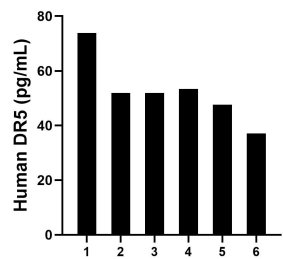
For technical support and original validation data for this product please contact:  
T: 1 (888) 4PTGLAB (1-888-478-4522) (toll free in USA), or 1(312) 455-8498 (outside USA)  
E: proteintech@ptglab.com  
W: ptglab.com

This product is exclusively available under Proteintech Group brand and is not available to purchase from any other manufacturer.

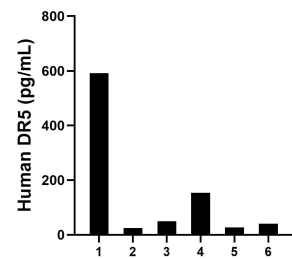
Selected Validation Data



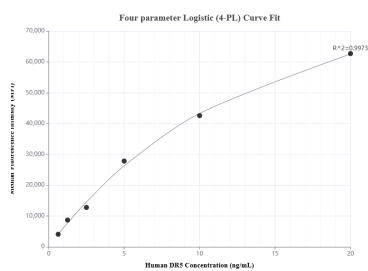
Sandwich ELISA standard curve of MP01541-1, Human DR5 Recombinant Matched Antibody Pair - PBS only. 84784-3-PBS was coated to a plate as the capture antibody and incubated with serial dilutions of standard Eg1648. 84784-1-PBS was HRP conjugated as the detection antibody. Range: 9.77-625 pg/mL



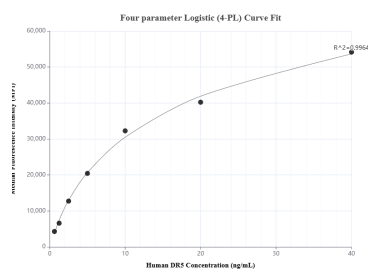
Plasma of six individual healthy human donors was measured. The DR5 concentration of detected samples was determined to be 52.6 pg/mL with a range of 37.1-73.8 pg/mL.



Serum of six individual healthy human donors was measured. The DR5 concentration of detected samples was determined to be 147.8 pg/mL with a range of 25.4-591.3 pg/mL.



Cytometric bead array standard curve of MP01541-1, DR5 Recombinant Matched Antibody Pair, PBS Only. Capture antibody: 84784-3-PBS. Detection antibody: 84784-1-PBS. Standard: Eg1648. Range: 0.625-20 ng/mL



Cytometric bead array standard curve of MP01541-2, DR5 Recombinant Matched Antibody Pair, PBS Only. Capture antibody: 84784-2-PBS. Detection antibody: 84784-1-PBS. Standard: Eg1648. Range: 0.625-40 ng/mL