

For Research Use Only

KLRG1 Recombinant antibody, PBS Only

Catalog Number: 84785-5-PBS



Basic Information

Catalog Number:

84785-5-PBS

Size:

100ug , Concentration: 1 mg/ml by Nanodrop;

Source:

Rabbit

Isotype:

IgG

GenBank Accession Number:

NM_005810.4

GeneID (NCBI):

10219

UNIPROT ID:

Q96E93-1

Full Name:

killer cell lectin-like receptor subfamily G, member 1

Calculated MW:

22 kDa

Purification Method:

Protein A purification

CloneNo.:

242327A4

Applications

Tested Applications:

IF/ICC, Indirect ELISA

Species Specificity:

human

Background Information

KLRG1 (killer cell lectin-like receptor subfamily G, member 1) is a C-type lectin inhibitory receptor that contains an immunoreceptor tyrosine-based inhibitory motif (ITIM) in its cytoplasmic domain. KLRG1 is expressed by subsets of NK and T cells, existing both as a monomer and as a disulfide-linked homodimer (PMID: 10741410; 19604491). It is considered to be a cell differentiation marker for NK and T cells and is strongly induced by viral and other infections (PMID: 20373518). Through interactions with members of the cadherin family, KLRG1 plays an inhibitory role on NK- and T-cell function (PMID: 19009530; 20373518).

Storage

Storage:

Store at -80°C.

Storage Buffer:

PBS Only

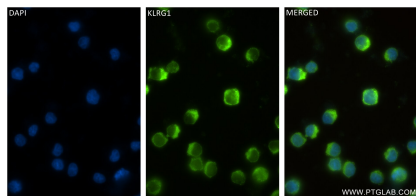
For technical support and original validation data for this product please contact:

T: 1 (888) 4PTGLAB (1-888-478-4522) (toll free in USA), or 1(312) 455-8498 (outside USA)

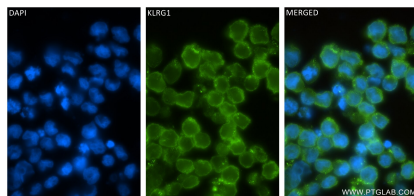
E: proteintech@ptglab.com
W: ptglab.com

This product is exclusively available under Proteintech Group brand and is not available to purchase from any other manufacturer.

Selected Validation Data



Immunofluorescent analysis of (4% PFA) fixed Jurkat cells using KLRG1 antibody (84785-5-RR, Clone: 242327A4) at dilution of 1:250 and CoraLite®488-Conjugated Goat Anti-Rabbit IgG(H+L) (SA00013-2). This data was developed using the same antibody clone with 84785-5-PBS in a different storage buffer formulation.



Immunofluorescent analysis of (4% PFA) fixed NK-92 cells using KLRG1 antibody (84785-5-RR, Clone: 242327A4) at dilution of 1:250 and CoraLite®488-Conjugated Goat Anti-Rabbit IgG(H+L) (SA00013-2). This data was developed using the same antibody clone with 84785-5-PBS in a different storage buffer formulation.