

For Research Use Only

KLRG1 Recombinant antibody

Catalog Number: 84785-5-RR



Basic Information

Catalog Number: 84785-5-RR	GenBank Accession Number: NM_005810.4	Purification Method: Protein A purification
Size: 100ul , Concentration: 1000 ug/ml by Nanodrop;	GeneID (NCBI): 10219	CloneNo.: 242327A4
Source: Rabbit	UNIPROT ID: Q96E93-1	Recommended Dilutions: IF/ICC 1:125-1:500
Isotype: IgG	Full Name: killer cell lectin-like receptor subfamily G, member 1	
	Calculated MW: 22 kDa	

Applications

Tested Applications: IF/ICC, ELISA	Positive Controls: IF/ICC : NK-92 cells, Jurkat cells
Species Specificity: human	

Background Information

KLRG1 (killer cell lectin-like receptor subfamily G, member 1) is a C-type lectin inhibitory receptor that contains an immunoreceptor tyrosine-based inhibitory motif (ITIM) in its cytoplasmic domain. KLRG1 is expressed by subsets of NK and T cells, existing both as a monomer and as a disulfide-linked homodimer (PMID: 10741410; 19604491). It is considered to be a cell differentiation marker for NK and T cells and is strongly induced by viral and other infections (PMID: 20373518). Through interactions with members of the cadherin family, KLRG1 plays an inhibitory role on NK- and T-cell function (PMID: 19009530; 20373518).

Storage

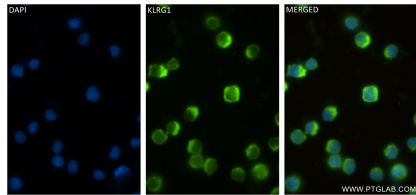
Storage:
Store at -20°C. Stable for one year after shipment.
Storage Buffer:
PBS with 0.02% sodium azide and 50% glycerol pH 7.3.
Aliquoting is unnecessary for -20°C storage

*** 20ul sizes contain 0.1% BSA

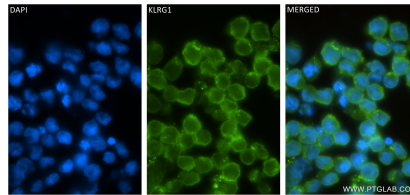
For technical support and original validation data for this product please contact:
T: 1 (888) 4PTGLAB (1-888-478-4522) (toll free in USA), or 1(312) 455-8498 (outside USA)
E: proteintech@ptglab.com
W: ptglab.com

This product is exclusively available under Proteintech Group brand and is not available to purchase from any other manufacturer.

Selected Validation Data



Immunofluorescent analysis of (4% PFA) fixed Jurkat cells using KLRG1 antibody (84785-5-RR, Clone: 242327A4) at dilution of 1:250 and CoraLite®488-Conjugated Goat Anti-Rabbit IgG(H+L) (SA00013-2).



Immunofluorescent analysis of (4% PFA) fixed NK-92 cells using KLRG1 antibody (84785-5-RR, Clone: 242327A4) at dilution of 1:250 and CoraLite®488-Conjugated Goat Anti-Rabbit IgG(H+L) (SA00013-2).