

For Research Use Only

Mouse APRIL/TNFSF13 Recombinant monoclonal antibody, PBS Only (Detector)

Catalog Number: 84789-4-PBS



Basic Information

Catalog Number: 84789-4-PBS	GenBank Accession Number: NM_023517.2	Purification Method: Protein A purification
Size: 100ug , Concentration: 1 mg/ml by Nanodrop;	GeneID (NCBI): 69583	CloneNo.: 241666F11
Source: Rabbit	UNIPROT ID: Q9D777	
Isotype: IgG	Full Name: tumor necrosis factor (ligand) superfamily, member 13	
Immunogen Catalog Number: EG1561	Calculated MW: 27kDa	

Applications

Tested Applications:
Sandwich ELISA, Indirect ELISA

Species Specificity:
mouse

Product Information

84789-4-PBS targets APRIL/TNFSF13 as part of a matched antibody pair:

MP01586-2: 84789-5-PBS capture and 84789-4-PBS detection (validated in Sandwich ELISA)

Unconjugated rabbit recombinant monoclonal antibody in PBS only (BSA and azide free) storage buffer at a concentration of 1 mg/mL, ready for conjugation. Created using Proteintech's proprietary in-house recombinant technology. Recombinant production enables unrivalled batch-to-batch consistency, easy scale-up, and future security of supply.

This conjugation ready format makes antibodies ideal for use in many applications including: ELISAs, multiplex assays requiring matched pairs, mass cytometry, and multiplex imaging applications. Antibody use should be optimized by the end user for each application and assay.

Storage

Storage:
Store at -80°C.

Storage Buffer:
PBS only, pH7.3

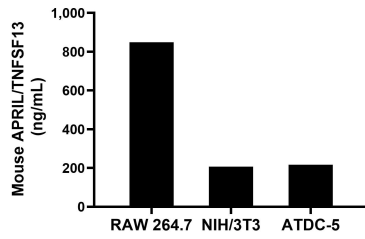
For technical support and original validation data for this product please contact:

T: 1 (888) 4PTGLAB (1-888-478-4522) (toll free in USA), or 1(312) 455-8498 (outside USA)

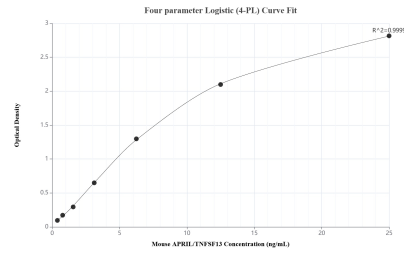
E: proteintech@ptglab.com
W: ptglab.com

This product is exclusively available under Proteintech Group brand and is not available to purchase from any other manufacturer.

Selected Validation Data



The mean APRIL/TNFSF13 concentration was determined to be 849.01 ng/mL in RAW 264.7 cell extract based on a 1.20 mg/mL extract load, 206.22 ng/mL in NIH/3T3 cell extract based on a 1.20 mg/mL extract load and 217.28 ng/mL in ATDC-5 cell extract based on a 1.20 mg/mL extract load.



Sandwich ELISA standard curve of MP01586-2, Mouse APRIL/TNFSF13 Recombinant Matched Antibody Pair - PBS only. 84789-5-PBS was coated to a plate as the capture antibody and incubated with serial dilutions of standard Eg1561. 84789-4-PBS was HRP conjugated as the detection antibody. Range: 0.391-25 ng/mL.