

For Research Use Only

Mouse Siglec-E Recombinant antibody, PBS Only (Capture)

Catalog Number: 84790-2-PBS



Basic Information

Catalog Number:

84790-2-PBS

Size:

100ug, Concentration: 1 mg/ml by Nanodrop;

Source:

Rabbit

Isotype:

IgG

GenBank Accession Number:

NM_031181.2

GeneID (NCBI):

83382

UNIPROT ID:

Q91Y57

Full Name:

sialic acid binding Ig-like lectin E

Calculated MW:

52 kDa

Observed MW:

70-90 kDa

Purification Method:

Protein A purification

CloneNo.:

242248H3

Applications

Tested Applications:

WB, Cytometric bead array, Indirect ELISA

Species Specificity:

mouse

Product Information

84790-2-PBS targets Siglec-E as part of a matched antibody pair:

MP01535-1: 84790-2-PBS capture and 84790-1-PBS detection (validated in Cytometric bead array)

Unconjugated rabbit recombinant monoclonal antibody in PBS only (BSA and azide free) storage buffer at a concentration of 1 mg/mL, ready for conjugation. Created using Proteintech's proprietary in-house recombinant technology. Recombinant production enables unrivalled batch-to-batch consistency, easy scale-up, and future security of supply.

This conjugation ready format makes antibodies ideal for use in many applications including: ELISAs, multiplex assays requiring matched pairs, mass cytometry, and multiplex imaging applications. Antibody use should be optimized by the end user for each application and assay.

Background Information

Sialic acid-binding immunoglobulin-like lectins (SIGLECs) are a family of cell surface proteins belonging to the immunoglobulin superfamily that contain sialoside-binding N-terminal domains (PMID: 9498912; 22749793). Mouse Siglec-E, also known as myeloid inhibitory siglec (MIS), is a mouse CD33-related siglec that contains three extracellular immunoglobulin-like domains, a transmembrane region and a cytoplasmic tail bearing two immunoreceptor tyrosine-based inhibitory motifs (ITIMs), which can recruit SHP-1 and SHP-2, two inhibitory regulators of immunoreceptor signal transduction (PMID: 11171044). Siglec-E is an inhibitory receptor and is expressed broadly on cells of innate immune cells including neutrophils, monocytes, macrophages, dendritic cells, and a subset of natural killer cells (PMID: 15048729; 31546700).

Storage

Storage:

Store at -80°C.

Storage Buffer:

PBS Only

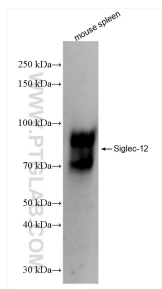
For technical support and original validation data for this product please contact:

T: 1 (888) 4PTGLAB (1-888-478-4522) (toll free in USA), or 1(312) 455-8498 (outside USA)

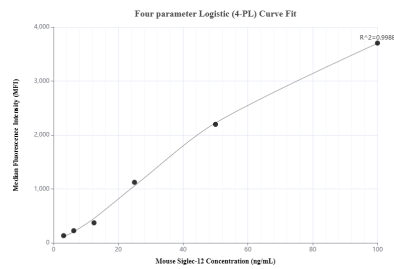
E: proteintech@ptglab.com
W: ptglab.com

This product is exclusively available under Proteintech Group brand and is not available to purchase from any other manufacturer.

Selected Validation Data



mouse spleen tissue was subjected to SDS PAGE followed by western blot with 84790-2-RR (Siglec-E antibody) at dilution of 1:1000 incubated at room temperature for 1.5 hours. This data was developed using the same antibody clone with 84790-2-PBS in a different storage buffer formulation.



Cytometric bead array standard curve of MP01535-1, MOUSE Siglec-12 Recombinant Matched Antibody Pair, PBS Only. Capture antibody: 84790-2-PBS. Detection antibody: 84790-1-PBS. Standard: Eg2733. Range: 3.125-100 ng/mL