

For Research Use Only

# Siglec-E Recombinant antibody

Catalog Number: 84790-2-RR



## Basic Information

<b>Catalog Number:</b> 84790-2-RR	<b>GenBank Accession Number:</b> NM_031181.2	<b>Purification Method:</b> Protein A purification
<b>Size:</b> 100ul , Concentration: 1000 ug/ml by Nanodrop;	<b>GeneID (NCBI):</b> 83382	<b>CloneNo.:</b> 242248H3
<b>Source:</b> Rabbit	<b>UNIPROT ID:</b> Q91Y57	<b>Recommended Dilutions:</b> WB 1:500-1:2000
<b>Isotype:</b> IgG	<b>Full Name:</b> sialic acid binding Ig-like lectin E	
	<b>Calculated MW:</b> 52 kDa	
	<b>Observed MW:</b> 70-90 kDa	

## Applications

<b>Tested Applications:</b> WB, ELISA	<b>Positive Controls:</b> WB : mouse spleen tissue,
<b>Species Specificity:</b> mouse	

## Background Information

Sialic acid-binding immunoglobulin-like lectins (SIGLECs) are a family of cell surface proteins belonging to the immunoglobulin superfamily that contain sialoside-binding N-terminal domains (PMID: PMID: 9498912; 22749793). Mouse Siglec-E, also known as myeloid inhibitory siglec (MIS), is a mouse CD33-related siglec that contains three extracellular immunoglobulin-like domains, a transmembrane region and a cytoplasmic tail bearing two immunoreceptor tyrosine-based inhibitory motifs (ITIMs), which can recruit SHP-1 and SHP-2, two inhibitory regulators of immunoreceptor signal transduction (PMID: 11171044). Siglec-E is an inhibitory receptor and is expressed broadly on cells of innate immune cells including neutrophils, monocytes, macrophages, dendritic cells, and a subset of natural killer cells (PMID: 15048729; 31546700).

## Storage

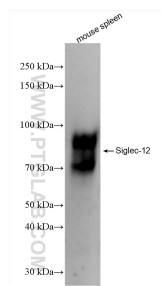
**Storage:**  
Store at -20°C. Stable for one year after shipment.  
**Storage Buffer:**  
PBS with 0.02% sodium azide and 50% glycerol pH 7.3.  
**Aliquoting is unnecessary for -20°C storage**

\*\*\* 20ul sizes contain 0.1% BSA

For technical support and original validation data for this product please contact:  
T: 1 (888) 4PTGLAB (1-888-478-4522) (toll free in USA), or 1(312) 455-8498 (outside USA)  
E: [proteintech@ptglab.com](mailto:proteintech@ptglab.com)  
W: [ptglab.com](http://ptglab.com)

This product is exclusively available under Proteintech Group brand and is not available to purchase from any other manufacturer.

## Selected Validation Data



mouse spleen tissue was subjected to SDS PAGE followed by western blot with 84790-2-RR (Siglec-E antibody) at dilution of 1:1000 incubated at room temperature for 1.5 hours.