

For Research Use Only

MCM3 Recombinant antibody, PBS Only (Capture)

Catalog Number: 84792-2-PBS



Basic Information

Catalog Number: 84792-2-PBS	GenBank Accession Number: BC001626	Purification Method: Protein A purification
Size: 100ug , Concentration: 1 mg/ml by Nanodrop;	GeneID (NCBI): 4172	CloneNo.: 242103E4
Source: Rabbit	UNIPROT ID: P25205	
Isotype: IgG	Full Name: minichromosome maintenance complex component 3	
Immunogen Catalog Number: AG7966	Calculated MW: 91 kDa	
	Observed MW: 102-105 kDa	

Applications

Tested Applications:
WB, IF/ICC, FC (Intra), Cytometric bead array, Indirect ELISA

Species Specificity:
human

Product Information

84792-2-PBS targets MCM3 as part of a matched antibody pair:

MP01593-1: 84792-2-PBS capture and 84792-3-PBS detection (validated in Cytometric bead array)

Unconjugated rabbit recombinant monoclonal antibody in PBS only (BSA and azide free) storage buffer at a concentration of 1 mg/mL, ready for conjugation. Created using Proteintech's proprietary in-house recombinant technology. Recombinant production enables unrivalled batch-to-batch consistency, easy scale-up, and future security of supply.

This conjugation ready format makes antibodies ideal for use in many applications including: ELISAs, multiplex assays requiring matched pairs, mass cytometry, and multiplex imaging applications. Antibody use should be optimized by the end user for each application and assay.

Background Information

MCM3, also named as HCC5, P1-MCM3, p102, RLF subunit beta and RLFB, belongs to the MCM family. MCM3 is essential for the initiation of DNA replication and is involved in ensuring that DNA replication is initiated precisely once per cell cycle (PMID: 33093917). The overexpression of MCM3 is related to proliferation of tumor cells (PMID: 31186514).

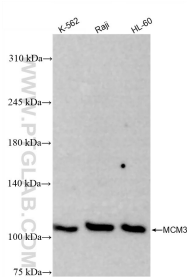
Storage

Storage:
Store at -80°C.
Storage Buffer:
PBS Only

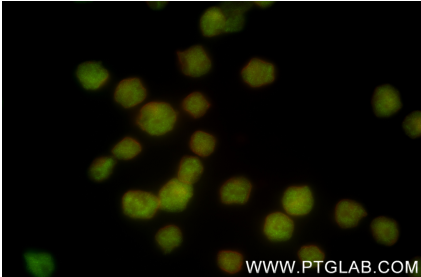
For technical support and original validation data for this product please contact:
T: 1 (888) 4PTGLAB (1-888-478-4522) (toll free in USA), or 1(312) 455-8498 (outside USA)
E: proteintech@ptglab.com
W: ptglab.com

This product is exclusively available under Proteintech Group brand and is not available to purchase from any other manufacturer.

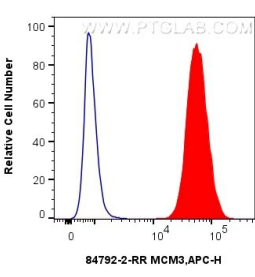
Selected Validation Data



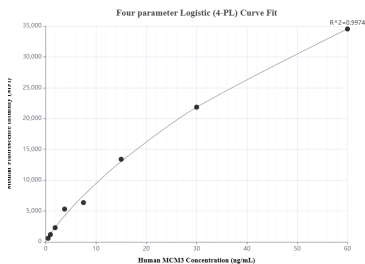
Various lysates were subjected to SDS PAGE followed by western blot with 84792-2-RR (MCM3 antibody) at dilution of 1:5000 incubated at room temperature for 1.5 hours. This data was developed using the same antibody clone with 84792-2-PBS in a different storage buffer formulation.



Immunofluorescent analysis of (4% PFA) fixed Raji cells using MCM3 antibody (84792-2-RR, Clone: 242103E4) at dilution of 1:500 and CoraLite®488-Conjugated Goat Anti-Rabbit IgG(H+L) (SA00013-2), CL594-Phalloidin (red). This data was developed using the same antibody clone with 84792-2-PBS in a different storage buffer formulation.



1x10⁶ K-562 cells were intracellularly stained with 0.25 ug Mcm3 Recombinant Antibody (84792-2-RR, Clone:242103E4) and APC-Conjugated Goat Anti-Rabbit IgG(H+L) (red), or 0.25 ug Rabbit IgG Isotype Control Recombinant Antibody (98136-1-RR, Clone: 240953C9) (blue). Cells were fixed and permeabilized with Transcription Factor Staining Buffer Kit (PF00011). This data was developed using the same antibody clone with 84792-2-PBS in a different storage



Cytometric bead array standard curve of MP01593-1, MCM3 Recombinant Matched Antibody Pair, PBS Only. Capture antibody: 84792-2-PBS. Detection antibody: 84792-3-PBS. Standard: Ag7966. Range: 0.469-60 ng/mL