

For Research Use Only

MCM3 Recombinant antibody

Catalog Number: 84792-2-RR



Basic Information

Catalog Number:

84792-2-RR

Size:

100ul , Concentration: 1000 µg/ml by Nanodrop;

Source:

Rabbit

Isotype:

IgG

Immunogen Catalog Number:

AG7966

GenBank Accession Number:

BC001626

GeneID (NCBI):

4172

UNIPROT ID:

P25205

Full Name:

minichromosome maintenance complex component 3

Calculated MW:

91 kDa

Observed MW:

102-105 kDa

Purification Method:

Protein A purification

CloneNo.:

242103E4

Recommended Dilutions:

WB 1:2000-1:10000

IF/ICC 1:250-1:1000

Applications

Tested Applications:

WB, IF/ICC, FC (Intra), ELISA

Species Specificity:

human

Positive Controls:

WB : K-562 cells, Raji cells, HL-60 cells

IF/ICC : Raji cells,

Background Information

MCM3, also named as HCC5, P1-MCM3, p102, RLF subunit beta and RLFB, belongs to the MCM family. MCM3 is essential for the initiation of DNA replication and is involved in ensuring that DNA replication is initiated precisely once per cell cycle(PMID: 33093917). The overexpression of MCM3 is related to proliferation of tumor cells(PMID: 31186514).

Storage

Storage:

Store at -20°C. Stable for one year after shipment.

Storage Buffer:

PBS with 0.02% sodium azide and 50% glycerol pH 7.3.

Aliquoting is unnecessary for -20°C storage

*** 20ul sizes contain 0.1% BSA

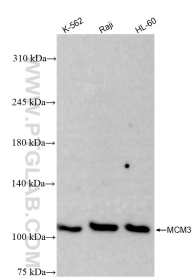
For technical support and original validation data for this product please contact:

T: 1 (888) 4PTGLAB (1-888-478-4522) (toll free in USA), or 1(312) 455-8498 (outside USA)

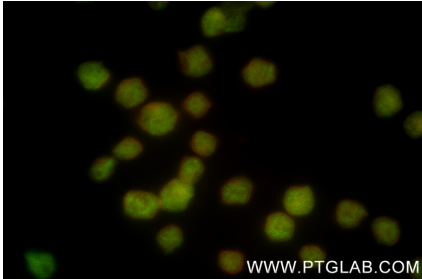
E: proteintech@ptglab.com
W: ptglab.com

This product is exclusively available under Proteintech Group brand and is not available to purchase from any other manufacturer.

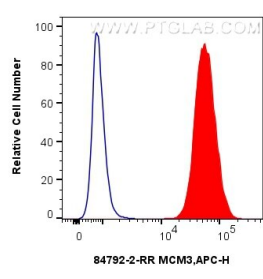
Selected Validation Data



Various lysates were subjected to SDS PAGE followed by western blot with 84792-2-RR (MCM3 antibody) at dilution of 1:5000 incubated at room temperature for 1.5 hours.



Immunofluorescent analysis of (4% PFA) fixed Raji cells using MCM3 antibody (84792-2-RR, Clone: 242103E4) at dilution of 1:500 and CoraLite®488-Conjugated Goat Anti-Rabbit IgG(H+L) (SA00013-2), CL594-Phalloidin (red).



1x10⁶ K-562 cells were intracellularly stained with 0.25 ug Mcm3 Recombinant Antibody (84792-2-RR, Clone:242103E4) and APC-Conjugated Goat Anti-Rabbit IgG(H+L)(red), or 0.25 ug Rabbit IgG Isotype Control Recombinant Antibody (98136-1-RR, Clone: 240953C9) (blue). Cells were fixed and permeabilized with Transcription Factor Staining Buffer Kit (PF00011).