

For Research Use Only

# MCM3 Recombinant antibody, PBS Only

Catalog Number: 84792-5-PBS



## Basic Information

### Catalog Number:

84792-5-PBS

### Size:

100ug , Concentration: 1 mg/ml by Nanodrop;

### Source:

Rabbit

### Isotype:

IgG

### Immunogen Catalog Number:

AG7966

### GenBank Accession Number:

BC001626

### GeneID (NCBI):

4172

### UNIPROT ID:

P25205

### Full Name:

minichromosome maintenance complex component 3

### Calculated MW:

91 kDa

### Observed MW:

102-105 kDa

### Purification Method:

Protein A purification

### CloneNo.:

242103B9

## Applications

### Tested Applications:

WB, IHC, FC (Intra), Indirect ELISA

### Species Specificity:

human, mouse, rat

## Background Information

MCM3, also named as HCC5, P1-MCM3, p102, RLF subunit beta and RLFB, belongs to the MCM family. MCM3 is essential for the initiation of DNA replication and is involved in ensuring that DNA replication is initiated precisely once per cell cycle(PMID: 33093917). The overexpression of MCM3 is related to proliferation of tumor cells(PMID: 31186514).

## Storage

### Storage:

Store at -80°C.

### Storage Buffer:

PBS Only

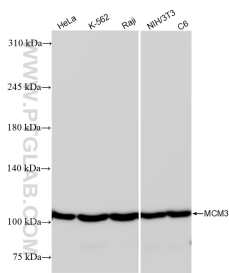
For technical support and original validation data for this product please contact:

T: 1 (888) 4PTGLAB (1-888-478-4522) (toll free in USA), or 1(312) 455-8498 (outside USA)

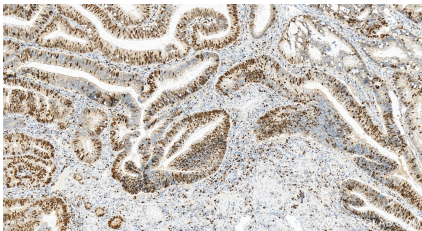
E: [proteintech@ptglab.com](mailto:proteintech@ptglab.com)  
W: [ptglab.com](http://ptglab.com)

This product is exclusively available under Proteintech Group brand and is not available to purchase from any other manufacturer.

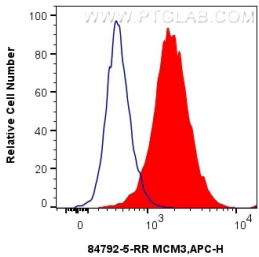
Selected Validation Data



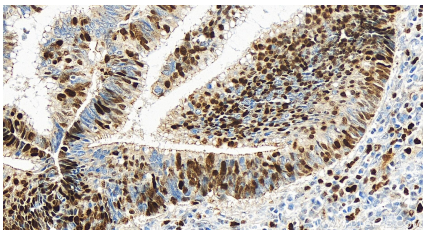
Various lysates were subjected to SDS PAGE followed by western blot with 84792-5-RR (MCM3 antibody) at dilution of 1:10000 incubated at room temperature for 1.5 hours. This data was developed using the same antibody clone with 84792-5-PBS in a different storage buffer formulation.



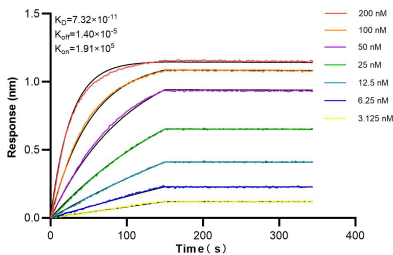
Immunohistochemical analysis of paraffin-embedded human colon cancer tissue slide using 84792-5-RR (MCM3 antibody) at dilution of 1:600 (under 10x lens). Heat mediated antigen retrieval with Tris-EDTA buffer (pH 9.0). This data was developed using the same antibody clone with 84792-5-PBS in a different storage buffer formulation.



1x10<sup>6</sup> HeLa cells were intracellularly stained with 0.25 ug MCM3 Recombinant antibody (84792-5-RR, Clone:242103B9) and APC-Conjugated Goat Anti-Rabbit IgG(H+L) (red), or 0.25 ug Rabbit IgG Isotype Control Recombinant Antibody (98136-1-RR, Clone: 240953C9) (blue). Cells were fixed and permeabilized with Transcription Factor Staining Buffer Kit (PF00011). This data was developed using the same antibody clone with 84792-5-PBS in a different storage



Immunohistochemical analysis of paraffin-embedded human colon cancer tissue slide using 84792-5-RR (MCM3 antibody) at dilution of 1:600 (under 40x lens). Heat mediated antigen retrieval with Tris-EDTA buffer (pH 9.0). This data was developed using the same antibody clone with 84792-5-PBS in a different storage buffer formulation.



Biolayer interferometry (BLI) kinetic assays of 84792-5-RR against Human MCM3 were performed. The affinity constant is 73.2 pM.