

For Research Use Only

# MCM3 Recombinant antibody

Catalog Number: 84792-5-RR



## Basic Information

|  |   |  |
|--|---|--|
| <b>Catalog Number:</b><br>84792-5-RR                           | <b>GenBank Accession Number:</b><br>BC001626                        | <b>Purification Method:</b><br>Protein A purification                  |
| <b>Size:</b><br>100ul , Concentration: 1000 ug/ml by Nanodrop; | <b>GeneID (NCBI):</b><br>4172                                       | <b>CloneNo.:</b><br>242103B9   |
| <b>Source:</b><br>Rabbit                                       | <b>UNIPROT ID:</b><br>P25205  | <b>Recommended Dilutions:</b><br>WB 1:5000-1:50000<br>IHC 1:300-1:1200 |
| <b>Isotype:</b><br>IgG   | <b>Full Name:</b><br>minichromosome maintenance complex component 3 |  |
| <b>Immunogen Catalog Number:</b><br>AG7966                     | <b>Calculated MW:</b><br>91 kDa                                     |  |
|  | <b>Observed MW:</b><br>102-105 kDa                                  |  |

## Applications

|   |  |
|---|--|
| <b>Tested Applications:</b><br>WB, IHC, FC (Intra), ELISA   | <b>Positive Controls:</b>  |
| <b>Species Specificity:</b><br>human, mouse, rat  | <b>WB :</b> HeLa cells, K-562 cells, Raji cells, NIH/3T3 cells, C6 cells |
| <b>Note-IHC:</b> suggested antigen retrieval with <b>TE buffer pH 9.0; (*) Alternatively, antigen retrieval may be performed with citrate buffer pH 6.0</b> | <b>IHC :</b> human colon cancer tissue,                                  |

## Background Information

MCM3, also named as HCC5, P1-MCM3, p102, RLF subunit beta and RLFB, belongs to the MCM family. MCM3 is essential for the initiation of DNA replication and is involved in ensuring that DNA replication is initiated precisely once per cell cycle(PMID: 33093917). The overexpression of MCM3 is related to proliferation of tumor cells(PMID: 31186514).

## Storage

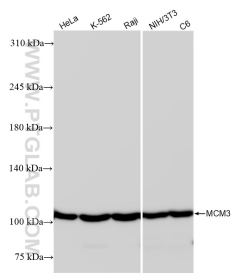
**Storage:**  
Store at -20°C. Stable for one year after shipment.  
**Storage Buffer:**  
PBS with 0.02% sodium azide and 50% glycerol pH 7.3.  
**Aliquoting is unnecessary for -20°C storage**

\*\*\* 20ul sizes contain 0.1% BSA

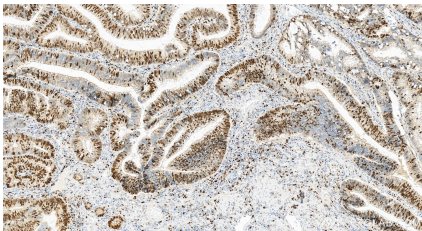
For technical support and original validation data for this product please contact:  
T: 1 (888) 4PTGLAB (1-888-478-4522) (toll free in USA), or 1(312) 455-8498 (outside USA)  
E: [proteintech@ptglab.com](mailto:proteintech@ptglab.com)  
W: [ptglab.com](http://ptglab.com)

This product is exclusively available under Proteintech Group brand and is not available to purchase from any other manufacturer.

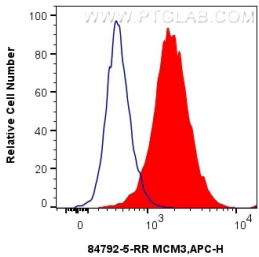
Selected Validation Data



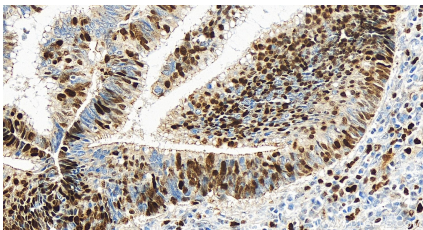
Various lysates were subjected to SDS PAGE followed by western blot with 84792-5-RR (MCM3 antibody) at dilution of 1:10000 incubated at room temperature for 1.5 hours.



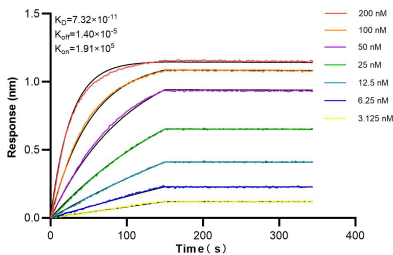
Immunohistochemical analysis of paraffin-embedded human colon cancer tissue slide using 84792-5-RR (MCM3 antibody) at dilution of 1:600 (under 10x lens). Heat mediated antigen retrieval with Tris-EDTA buffer (pH 9.0).



1x10<sup>6</sup> HeLa cells were intracellularly stained with 0.25 ug MCM3 Recombinant antibody (84792-5-RR, Clone:242103B9) and APC-Conjugated Goat Anti-Rabbit IgG(H+L)(red), or 0.25 ug Rabbit IgG Isotype Control Recombinant Antibody (98136-1-RR, Clone: 240953C9) (blue). Cells were fixed and permeabilized with Transcription Factor Staining Buffer Kit (PF00011).



Immunohistochemical analysis of paraffin-embedded human colon cancer tissue slide using 84792-5-RR (MCM3 antibody) at dilution of 1:600 (under 40x lens). Heat mediated antigen retrieval with Tris-EDTA buffer (pH 9.0).



Bi-layer interferometry (BLI) kinetic assays of 84792-5-RR against Human MCM3 were performed. The affinity constant is 73.2 pM.