

For Research Use Only

# RNF2 Recombinant antibody, PBS Only (Detector)

Catalog Number: 84793-7-PBS



## Basic Information

<b>Catalog Number:</b> 84793-7-PBS	<b>GenBank Accession Number:</b> BC012583	<b>Purification Method:</b> Protein A purification
<b>Size:</b> 100ug , Concentration: 1 mg/ml by Nanodrop;	<b>GeneID (NCBI):</b> 6045	<b>CloneNo.:</b> 242181G6
<b>Source:</b> Rabbit	<b>UNIPROT ID:</b> Q99496	
<b>Isotype:</b> IgG	<b>Full Name:</b> ring finger protein 2	
<b>Immunogen Catalog Number:</b> AG8900	<b>Calculated MW:</b> 336 aa, 38 kDa	

## Applications

**Tested Applications:**  
Sandwich ELISA, Indirect ELISA, Sample test

**Species Specificity:**  
human

## Product Information

84793-7-PBS targets RNF2 as part of a matched antibody pair:

MP01591-3: 84793-6-PBS capture and 84793-7-PBS detection (validated in Sandwich ELISA)

Unconjugated rabbit recombinant monoclonal antibody in PBS only (BSA and azide free) storage buffer at a concentration of 1 mg/mL, ready for conjugation. Created using Proteintech's proprietary in-house recombinant technology. Recombinant production enables unrivalled batch-to-batch consistency, easy scale-up, and future security of supply.

This conjugation ready format makes antibodies ideal for use in many applications including: ELISAs, multiplex assays requiring matched pairs, mass cytometry, and multiplex imaging applications. Antibody use should be optimized by the end user for each application and assay.

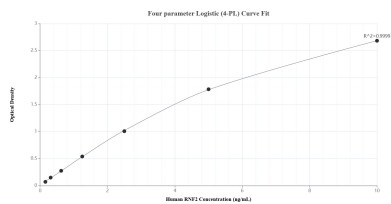
## Storage

**Storage:**  
Store at -80°C.  
**Storage Buffer:**  
PBS Only

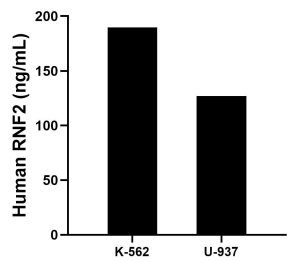
For technical support and original validation data for this product please contact:  
T: 1 (888) 4PTGLAB (1-888-478-4522) (toll free in USA), or 1(312) 455-8498 (outside USA)  
E: [proteintech@ptglab.com](mailto:proteintech@ptglab.com)  
W: [ptglab.com](http://ptglab.com)

This product is exclusively available under Proteintech Group brand and is not available to purchase from any other manufacturer.

## Selected Validation Data



Sandwich ELISA standard curve of MP01591-3, Human RNF2 Recombinant Matched Antibody Pair - PBS only. 84793-6-PBS was coated to a plate as the capture antibody and incubated with serial dilutions of standard Ag8900. 84793-7-PBS was HRP conjugated as the detection antibody. Range: 0.156-10 ng/mL



The mean RNF2 concentration was determined to be 189.81 ng/mL in K-562 cell extract based on a 2.40 mg/mL extract load and 126.95 ng/mL in U-937 cell extract based on a 3.00 mg/mL extract load.