

For Research Use Only

SLC16A3 Recombinant monoclonal antibody, PBS Only (Capture)

Catalog Number: 84797-6-PBS



Basic Information

Catalog Number: 84797-6-PBS	GenBank Accession Number: BC112269	Purification Method: Protein A purification
Size: 100ug , Concentration: 1 mg/ml by Nanodrop;	GeneID (NCBI): 9123	CloneNo.: 242296C11
Source: Rabbit	UNIPROT ID: O15427	
Isotype: IgG	Full Name: solute carrier family 16, member 3 (monocarboxylic acid transporter 4)	
Immunogen Catalog Number: AG18788	Calculated MW: 465 aa, 49 kDa	

Applications

Tested Applications:
Sandwich ELISA, Indirect ELISA

Species Specificity:
human

Product Information

84797-6-PBS targets SLC16A3 as part of a matched antibody pair:

MP01590-3: 84797-6-PBS capture and 84797-3-PBS detection (validated in Sandwich ELISA)

Unconjugated rabbit recombinant monoclonal antibody in PBS only (BSA and azide free) storage buffer at a concentration of 1 mg/mL, ready for conjugation. Created using Proteintech's proprietary in-house recombinant technology. Recombinant production enables unrivalled batch-to-batch consistency, easy scale-up, and future security of supply.

This conjugation ready format makes antibodies ideal for use in many applications including: ELISAs, multiplex assays requiring matched pairs, mass cytometry, and multiplex imaging applications. Antibody use should be optimized by the end user for each application and assay.

Storage

Storage:
Store at -80°C.

Storage Buffer:
PBS only, pH7.3

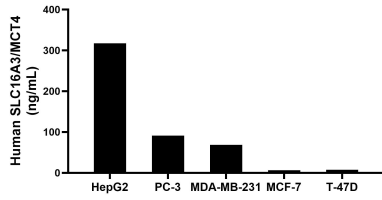
For technical support and original validation data for this product please contact:

T: 1 (888) 4PTGLAB (1-888-478-4522) (toll free in USA), or 1(312) 455-8498 (outside USA)

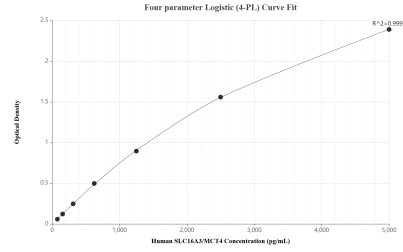
E: proteintech@ptglab.com
W: ptglab.com

This product is exclusively available under Proteintech Group brand and is not available to purchase from any other manufacturer.

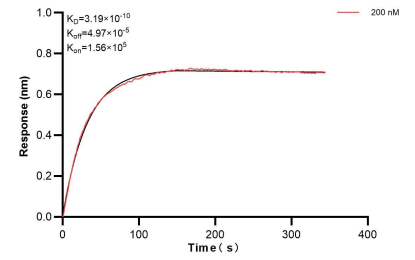
Selected Validation Data



The mean SLC16A3/MCT4 concentration was determined to be 317.3 ng/mL in HepG2 cell extract based on a 1.2 mg/mL extract load, 91.0 ng/mL in PC-3 cell extract based on a 1.2 mg/mL extract load, 68.6 ng/mL in MDA-MB-231 cell extract based on a 1.2 mg/mL extract load, 6.2 ng/mL in MCF-7 cell extract based on a 1.2 mg/mL extract load and 7.5 ng/mL in T-47D cell extract based on a 1.2 mg/mL extract load.



Sandwich ELISA standard curve of MP01590-3, Human SLC16A3/MCT4 Recombinant Matched Antibody Pair - PBS only. 84797-6-PBS was coated to a plate as the capture antibody and incubated with serial dilutions of standard Ag18788. 84797-3-PBS was HRP conjugated as the detection antibody. Range: 78.1-5000 pg/mL



Bi-layer interferometry (BLI) kinetic assay of 84797-6-PBS against Human SLC16A3 was performed. The affinity constant is 0.319 nM.