

For Research Use Only

# Mouse CD9 Recombinant antibody, PBS Only (Capture/Detector)

Catalog Number: 84801-2-PBS



## Basic Information

<b>Catalog Number:</b> 84801-2-PBS	<b>GenBank Accession Number:</b> NM_007657.3	<b>Purification Method:</b> Protein A purification
<b>Size:</b> 100ug , Concentration: 1 mg/ml by Nanodrop;	<b>GeneID (NCBI):</b> 12527	<b>CloneNo.:</b> 242432G4
<b>Source:</b> Rabbit	<b>UNIPROT ID:</b> P40240	
<b>Isotype:</b> IgG	<b>Full Name:</b> CD9 antigen	
	<b>Calculated MW:</b> 25 kDa	

## Applications

**Tested Applications:**  
Cytometric bead array, Sandwich ELISA, Indirect ELISA, Sample test

**Species Specificity:**  
mouse

## Product Information

84801-2-PBS targets CD9 as part of a matched antibody pair:

MP01578-1: 84801-3-PBS capture and 84801-2-PBS detection (validated in Cytometric bead array)

MP01578-2: 84801-2-PBS capture and 84801-1-PBS detection (validated in Cytometric bead array)

MP01578-3: 84801-2-PBS capture and 84801-6-PBS detection (validated in Sandwich ELISA)

Unconjugated rabbit recombinant monoclonal antibody in PBS only (BSA and azide free) storage buffer at a concentration of 1 mg/mL, ready for conjugation. Created using Proteintech's proprietary in-house recombinant technology. Recombinant production enables unrivalled batch-to-batch consistency, easy scale-up, and future security of supply.

This conjugation ready format makes antibodies ideal for use in many applications including: ELISAs, multiplex assays requiring matched pairs, mass cytometry, and multiplex imaging applications. Antibody use should be optimized by the end user for each application and assay.

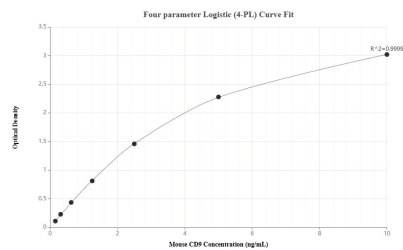
## Storage

**Storage:**  
Store at -80°C.  
**Storage Buffer:**  
PBS Only

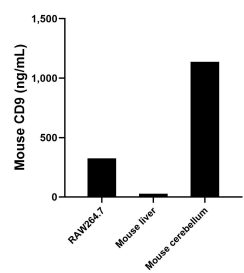
For technical support and original validation data for this product please contact:  
T: 1 (888) 4PTGLAB (1-888-478-4522) (toll free in USA), or 1(312) 455-8498 (outside USA)  
E: [proteintech@ptglab.com](mailto:proteintech@ptglab.com)  
W: [ptglab.com](http://ptglab.com)

This product is exclusively available under Proteintech Group brand and is not available to purchase from any other manufacturer.

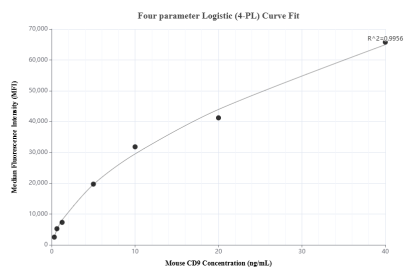
## Selected Validation Data



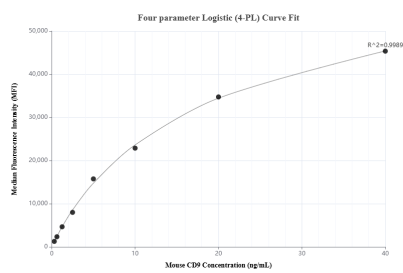
Sandwich ELISA standard curve of MP01578-3, Mouse CD9 Recombinant Matched Antibody Pair - PBS only. 84801-2-PBS was coated to a plate as the capture antibody and incubated with serial dilutions of standard Eg1397. 84801-6-PBS was HRP conjugated as the detection antibody. Range: 0.156-10 ng/mL



The mean CD9 concentration was determined to be 325.24 ng/mL in RAW264.7 cell extract based on a 1.3 mg/mL extract load, 27.50 ng/mL in mouse liver tissue extract based on a 3.7 mg/mL extract load and 1,137.62 ng/mL in mouse cerebellum tissue extract based on a 2.9 mg/mL extract load.



Cytometric bead array standard curve of MP01578-1, MOUSE CD9 Recombinant Matched Antibody Pair, PBS Only. Capture antibody: 84801-3-PBS. Detection antibody: 84801-2-PBS. Standard: Eg1397. Range: 0.313-40 ng/mL



Cytometric bead array standard curve of MP01578-2, MOUSE CD9 Recombinant Matched Antibody Pair, PBS Only. Capture antibody: 84801-2-PBS. Detection antibody: 84801-1-PBS. Standard: Eg1397. Range: 0.313-40 ng/mL