

For Research Use Only

# Mouse Endoglin/CD105 Recombinant antibody, PBS Only (Detector)

Catalog Number: 84807-3-PBS



## Basic Information

<b>Catalog Number:</b> 84807-3-PBS	<b>GenBank Accession Number:</b> NM_007932.2	<b>Purification Method:</b> Protein A purification
<b>Size:</b> 100ug , Concentration: 1 mg/ml by Nanodrop;	<b>GeneID (NCBI):</b> 13805	<b>CloneNo.:</b> 242305G10
<b>Source:</b> Rabbit	<b>UNIPROT ID:</b> Q63961	
<b>Isotype:</b> IgG	<b>Full Name:</b> endoglin	
	<b>Calculated MW:</b> 70kDa	

## Applications

**Tested Applications:**  
Cytometric bead array, Sandwich ELISA, Indirect ELISA, Sample test

**Species Specificity:**  
mouse

## Product Information

84807-3-PBS targets Endoglin/CD105 as part of a matched antibody pair:

MP01582-2: 84807-2-PBS capture and 84807-3-PBS detection (validated in Cytometric bead array, Sandwich ELISA)

Unconjugated rabbit recombinant monoclonal antibody in PBS only (BSA and azide free) storage buffer at a concentration of 1 mg/mL, ready for conjugation. Created using Proteintech's proprietary in-house recombinant technology. Recombinant production enables unrivalled batch-to-batch consistency, easy scale-up, and future security of supply.

This conjugation ready format makes antibodies ideal for use in many applications including: ELISAs, multiplex assays requiring matched pairs, mass cytometry, and multiplex imaging applications. Antibody use should be optimized by the end user for each application and assay.

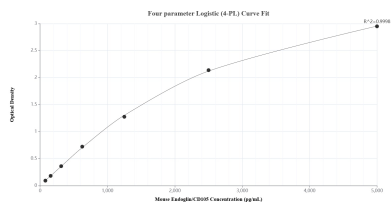
## Storage

**Storage:**  
Store at -80°C.  
**Storage Buffer:**  
PBS Only

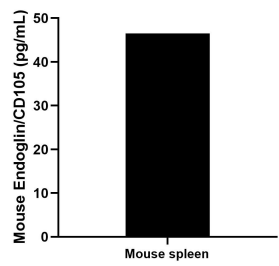
For technical support and original validation data for this product please contact:  
T: 1 (888) 4PTGLAB (1-888-478-4522) (toll free in USA), or 1(312) 455-8498 (outside USA)  
E: [proteintech@ptglab.com](mailto:proteintech@ptglab.com)  
W: [ptglab.com](http://ptglab.com)

This product is exclusively available under Proteintech Group brand and is not available to purchase from any other manufacturer.

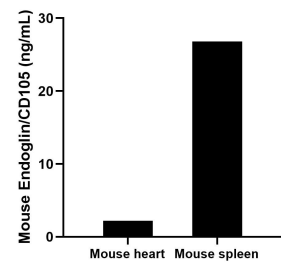
Selected Validation Data



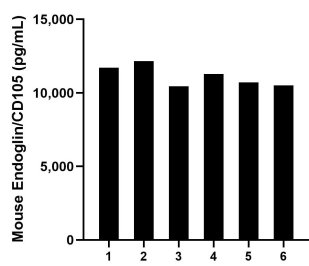
Sandwich ELISA standard curve of MP01582-2, Mouse Endoglin/CD105 Recombinant Matched Antibody Pair - PBS only. 84807-2-PBS was coated to a plate as the capture antibody and incubated with serial dilutions of standard Eg1292. 84807-3-PBS was HRP conjugated as the detection antibody. Range: 78.1-5000 pg/mL



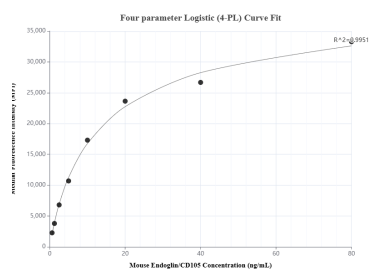
Mouse spleen cells (1/2 spleen; 1-2 mm pieces) were cultured in DMEM supplemented with 10% fetal bovine serum, 2.5 mM L-glutamine, 100 U/mL penicillin, and 100 µg/mL streptomycin sulfate. An aliquot of the cell culture supernatant was removed, assayed for mouse Endoglin/CD105, and measured 46.5 pg/mL



The mean Endoglin/CD105 concentration was determined to be 2.2 ng/mL in mouse heart tissue homogenates based on a 1.4 mg/mL extract load and 26.8 ng/mL in mouse spleen tissue homogenates based on a 2.3 mg/mL extract load.



Serum of six mice was measured. The Endoglin/CD105 concentration of detected samples was determined to be 11,141.1 pg/mL with a range of 10,457.3 -12,164.8 pg/mL



Cytometric bead array standard curve of MP01582-2, MOUSE Endoglin/CD105 Recombinant Matched Antibody Pair, PBS Only. Capture antibody: 84807-2-PBS. Detection antibody: 84807-3-PBS. Standard: Eg1292. Range: 0.625-80 ng/mL