

For Research Use Only

6*his,His tag Recombinant antibody

Catalog Number:84814-1-RR



Basic Information

Catalog Number:

84814-1-RR

Size:

100ul , Concentration: 1000 µg/ml by Nanodrop;

Source:

Rabbit

Isotype:

IgG

GenBank Accession Number:

GeneID (NCBI):

5

Full Name:

6*His, His Tag

Calculated MW:

1 kDa

Purification Method:

Protein A purification

CloneNo.:

241261A7

Recommended Dilutions:

WB 1:1000-1:6000

IF/ICC 1:200-1:800

Applications

Tested Applications:

WB, IF/ICC, FC (Intra), ELISA

Species Specificity:

recombinant protein

Positive Controls:

WB : Transfected HEK-293T cells,

IF/ICC : HEK-293 cells,

Background Information

Protein tags are protein or peptide sequences located either on the C- or N- terminal of the target protein, which facilitates one or several of the following characteristics: solubility, detection, purification, localization and expression. His tag is often used for affinity purification and binding assays. Expressed His-tagged proteins can be purified and detected easily because the string of histidine residues binds to several types of immobilized metal ions, including nickel, cobalt and copper, under specific buffer conditions. The antibody reacts to the 6*His tagged protein.

Storage

Storage:

Store at -20°C. Stable for one year after shipment.

Storage Buffer:

PBS with 0.02% sodium azide and 50% glycerol pH 7.3.

Aliquoting is unnecessary for -20°C storage

*** 20ul sizes contain 0.1% BSA

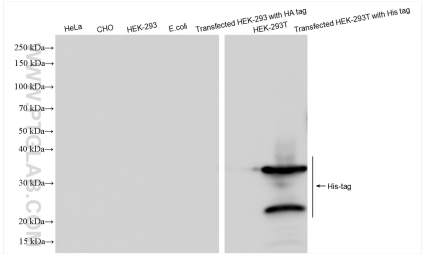
For technical support and original validation data for this product please contact:

T: 1 (888) 4PTGLAB (1-888-478-4522) (toll free in USA), or 1(312) 455-8498 (outside USA)

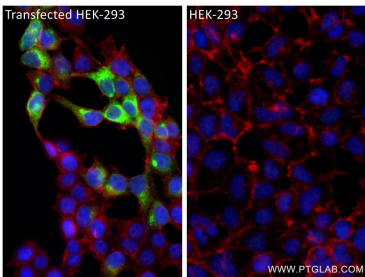
E: proteintech@ptglab.com
W: ptglab.com

This product is exclusively available under Proteintech Group brand and is not available to purchase from any other manufacturer.

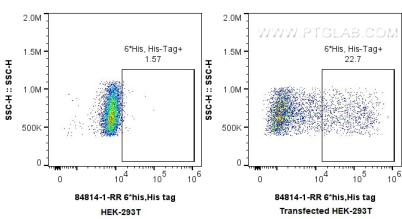
Selected Validation Data



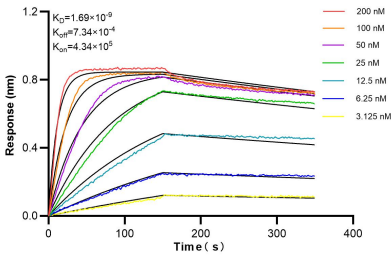
Various lysates were subjected to SDS PAGE followed by western blot with 84814-1-RR (6^{his},His tag antibody) at dilution of 1:3000 incubated at room temperature for 1.5 hours.



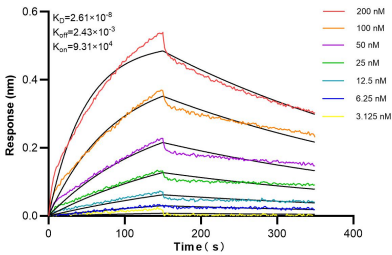
Immunofluorescent analysis of (4% PFA) fixed HEK-293 cells using 6^{his},His tag antibody (84814-1-RR, Clone: 241261A7) at dilution of 1:400 and CoraLite®488-Conjugated Goat Anti-Rabbit IgG(H+L) (SA00013-2), CL594-Phalloidin (red).



1x10⁶ Transfected HEK-293T cells were intracellularly stained with 0.25 ug 6^{his},His tag Recombinant antibody (84814-1-RR, Clone:241261A7) and CoraLite®488-Conjugated Goat Anti-Rabbit IgG(H+L) (SA00013-2), and 0.25 ug Rabbit IgG Isotype Control RecAb (98136-1-RR, Clone: 240953C9). Cells were fixed with 4% PFA and permeabilized with Flow Cytometry Perm Buffer (PF00011-C).



Biolayer interferometry (BLI) kinetic assays of 84814-1-RR against a protein with N-terminal 6^{his}His Tag were performed. The affinity constant is 1.69 nM.



Biolayer interferometry (BLI) kinetic assays of 84814-1-RR against a protein with C-terminal 6^{his}His Tag were performed. The affinity constant is 26.1 nM.