

For Research Use Only

# Midkine Recombinant antibody, PBS Only

Catalog Number: 84815-1-PBS



## Basic Information

<b>Catalog Number:</b> 84815-1-PBS	<b>GenBank Accession Number:</b> BC011704	<b>Purification Method:</b> Protein A purification
<b>Size:</b> 100ug , Concentration: 1 mg/ml by Nanodrop;	<b>GeneID (NCBI):</b> 4192	<b>CloneNo.:</b> 241880H1
<b>Source:</b> Rabbit	<b>UNIPROT ID:</b> P21741	
<b>Isotype:</b> IgG	<b>Full Name:</b> midkine (neurite growth-promoting factor 2)	
<b>Immunogen Catalog Number:</b> AG24547	<b>Calculated MW:</b> 16 kDa	

## Applications

**Tested Applications:**  
IF/ICC, FC (Intra), Indirect ELISA

**Species Specificity:**  
human

## Background Information

Midkine is a heparin-binding growth factor identified over 20 years ago and enhances the survival, migration and many other activities of target cells. Midkine is rich in both basic amino acids and cysteine, and is not related to most other growth factors/cytokines. It is strongly expressed during embryonic periods, especially at the midgestation stage, and plays important roles in development, especially in neurogenesis. Midkine expression in adult tissue is generally weak or undetectable, and it is induced upon injury and exerts many activities related to tissue repair. The biological activities of midkine in malignant tumors include proliferation, angiogenesis, invasion and metastasis. Various cancers express significantly higher levels of the midkine protein in early stage tumor tissues than in adjacent normal tissue.

## Storage

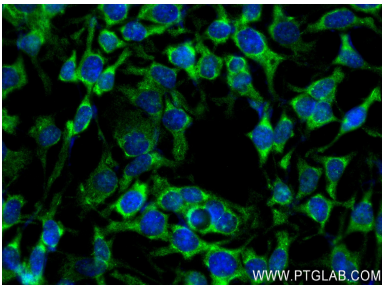
**Storage:**  
Store at -80°C.

**Storage Buffer:**  
PBS Only

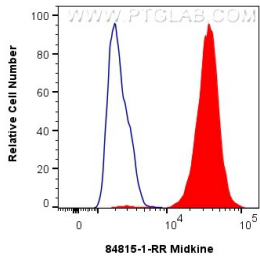
For technical support and original validation data for this product please contact:  
T: 1 (888) 4PTGLAB (1-888-478-4522) (toll free in USA), or 1(312) 455-8498 (outside USA)  
E: [proteintech@ptglab.com](mailto:proteintech@ptglab.com)  
W: [ptglab.com](http://ptglab.com)

This product is exclusively available under Proteintech Group brand and is not available to purchase from any other manufacturer.

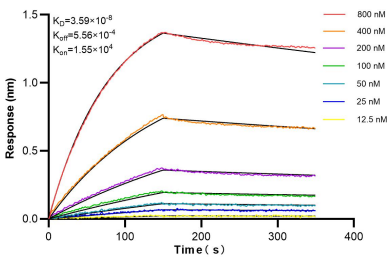
Selected Validation Data



Immunofluorescent analysis of (-20°C Ethanol) fixed HeLa cells using Midkine antibody (84815-1-RR, Clone: 241880H1 ) at dilution of 1:250 and CoraLite®488-Conjugated Goat Anti-Rabbit IgG(H+L) (SA00013-2). This data was developed using the same antibody clone with 84815-1-PBS in a different storage buffer formulation.



1x10<sup>6</sup> HeLa cells were intracellularly stained with 0.25 ug Midkine Recombinant antibody (84815-1-RR, Clone:241880H1) and CoraLite®488-Conjugated Goat Anti-Rabbit IgG(H+L) (SA00013-2)(red), or 0.25 ug Rabbit IgG Isotype Control RecAb (98136-1-RR, Clone: 240953C9) (blue). Cells were fixed with 4% PFA and permeabilized with Flow Cytometry Perm Buffer (PF00011-C). This data was developed using the same antibody clone with 84815-1-PBS in a



Biolayer interferometry (BLI) kinetic assays of 84815-1-RR against Human Midkine were performed. The affinity constant is 35.9 nM.