

For Research Use Only

FceR1a Recombinant antibody

Catalog Number: 84816-4-RR



Basic Information

Catalog Number:

84816-4-RR

Size:

100ul , Concentration: 1000 ug/ml by
Nanodrop;

Source:

Rabbit

Isotype:

IgG

GenBank Accession Number:

NM_010184.2

GeneID (NCBI):

14125

UNIPROT ID:

P20489

Full Name:

Fc receptor, IgE, high affinity I, alpha
polypeptide

Calculated MW:

29 kDa

Observed MW:

42 kDa

Purification Method:

Protein A purification

CloneNo.:

242008D7

Recommended Dilutions:

WB 1:5000-1:50000

Applications

Tested Applications:

WB, ELISA

Species Specificity:

mouse

Positive Controls:

WB : MC/9 cells,

Background Information

Fc epsilon Receptor I alpha (FceR1a) is a single-pass type I membrane protein that contains 2 immunoglobulin-like domains. FceR1a forms a tetrameric complex with one beta and two gamma subunits (PMID: 19406478). FceRI is the high-affinity receptor for the Fc region of immunoglobulin E (IgE) (PMID: 1532373). It is expressed on mast cells and basophils and plays a central role in the allergic response (PMID: 2148316).

Storage

Storage:

Store at -20°C. Stable for one year after shipment.

Storage Buffer:

PBS with 0.02% sodium azide and 50% glycerol pH 7.3.

Aliquoting is unnecessary for -20°C storage

*** 20ul sizes contain 0.1% BSA

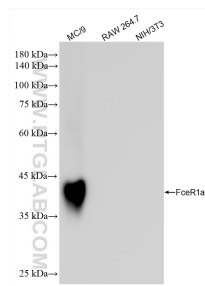
For technical support and original validation data for this product please contact:

T: 1 (888) 4PTGLAB (1-888-478-4522) (toll free
in USA), or 1(312) 455-8498 (outside USA)

E: proteintech@ptglab.com
W: ptglab.com

This product is exclusively available under Proteintech Group brand and is not available to purchase from any other manufacturer.

Selected Validation Data



Various lysates were subjected to SDS PAGE followed by western blot with 84816-4-RR (Fc-epsilon RI-alpha (FcεRI) antibody) at dilution of 1:10000 incubated at room temperature for 1.5 hours.