

For Research Use Only

# G-CSFR Recombinant antibody, PBS Only (Capture/Detector)

Catalog Number: 84827-2-PBS



## Basic Information

<b>Catalog Number:</b> 84827-2-PBS	<b>GenBank Accession Number:</b> NM_000760.3	<b>Purification Method:</b> Protein A purification
<b>Size:</b> 100ug , Concentration: 1 mg/ml by Nanodrop;	<b>GeneID (NCBI):</b> 1441	<b>CloneNo.:</b> 242246A5
<b>Source:</b> Rabbit	<b>UNIPROT ID:</b> Q99062-1	
<b>Isotype:</b> IgG	<b>Full Name:</b> colony stimulating factor 3 receptor (granulocyte)	
	<b>Calculated MW:</b> 92 kDa	
	<b>Observed MW:</b> 120-140 kDa	

## Applications

**Tested Applications:**  
WB, Cytometric bead array, Sandwich ELISA, Indirect ELISA, Sample test

**Species Specificity:**  
human

## Product Information

84827-2-PBS targets G-CSFR as part of a matched antibody pair:

MP01609-1: 84827-1-PBS capture and 84827-2-PBS detection (validated in Cytometric bead array)

MP01609-2: 84827-2-PBS capture and 84827-3-PBS detection (validated in Cytometric bead array)

MP01609-3: 84827-4-PBS capture and 84827-2-PBS detection (validated in Sandwich ELISA)

Unconjugated rabbit recombinant monoclonal antibody in PBS only (BSA and azide free) storage buffer at a concentration of 1 mg/mL, ready for conjugation. Created using Proteintech's proprietary in-house recombinant technology. Recombinant production enables unrivalled batch-to-batch consistency, easy scale-up, and future security of supply.

This conjugation ready format makes antibodies ideal for use in many applications including: ELISAs, multiplex assays requiring matched pairs, mass cytometry, and multiplex imaging applications. Antibody use should be optimized by the end user for each application and assay.

## Background Information

G-CSF-R, also named as CSF3R, CD114 and GCSFR is the receptor for colony stimulating factor 3, a cytokine that controls the production, differentiation, and function of granulocytes. It is a 130 kD to 150 kD glycoprotein single chain receptor which binds and activated by GCSF. In addition it may function in some adhesion or recognition events at the cell surface. It has been classified as a member of the hematopoietic (cytokine) receptor family, cytokine receptor class I, or the gp 130 related cytokine receptor family (although it does not apparently bind to gp 130). GCSF receptors can be found on neutrophils, myeloid leukemia cells that respond to GCSF, bone marrow cells of neutrophilic granulocyte lineage, and on placental trophoblasts. In addition, a soluble form is also expressed. Mutations in this gene are a cause of Kostmann syndrome, also known as severe congenital neutropenia.

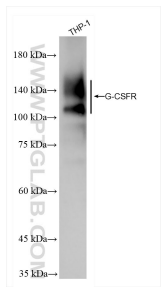
## Storage

**Storage:**  
Store at -80°C.  
**Storage Buffer:**  
PBS Only

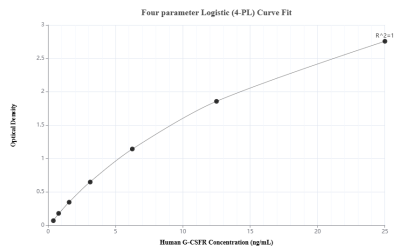
For technical support and original validation data for this product please contact:  
T: 1 (888) 4PTGLAB (1-888-478-4522) (toll free in USA), or 1(312) 455-8498 (outside USA)  
E: [proteintech@ptglab.com](mailto:proteintech@ptglab.com)  
W: [ptglab.com](http://ptglab.com)

This product is exclusively available under Proteintech Group brand and is not available to purchase from any other manufacturer.

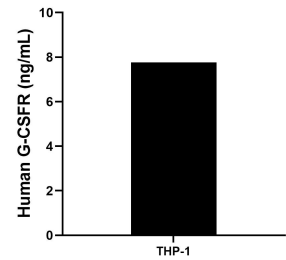
Selected Validation Data



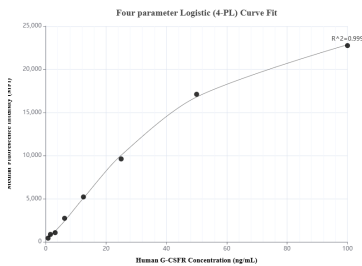
THP-1 cells were subjected to SDS PAGE followed by western blot with 84827-2-RR (CSF3R antibody) at dilution of 1:5000 incubated at room temperature for 1.5 hours. This data was developed using the same antibody clone with 84827-2-PBS in a different storage buffer formulation.



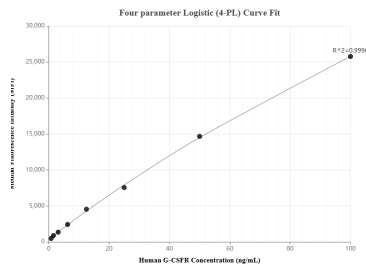
Sandwich ELISA standard curve of MP01609-3, Human G-CSFR Recombinant Matched Antibody Pair - PBS only. 84827-4-PBS was coated to a plate as the capture antibody and incubated with serial dilutions of standard Eg2821. 84827-2-PBS was HRP conjugated as the detection antibody. Range: 0.391-25 ng/mL



The mean G-CSFR concentration was determined to be 7.76 ng/mL in THP-1 cell extract based on a 4.4 mg/mL extract load.



Cytometric bead array standard curve of MP01609-2, G-CSFR Recombinant Matched Antibody Pair, PBS Only. Capture antibody: 84827-2-PBS. Detection antibody: 84827-3-PBS. Standard: Eg2821. Range: 0.781-100 ng/mL



Cytometric bead array standard curve of MP01609-1, G-CSFR Recombinant Matched Antibody Pair, PBS Only. Capture antibody: 84827-1-PBS. Detection antibody: 84827-2-PBS. Standard: Eg2821. Range: 0.781-100 ng/mL