

For Research Use Only

Phospho-POLR2A (Ser5) Recombinant antibody

Catalog Number: 84834-1-RR



Basic Information

Catalog Number:

84834-1-RR

Size:

100ul, Concentration: 1000 µg/ml by Nanodrop;

Source:

Rabbit

Isotype:

IgG

GenBank Accession Number:

BC137231

GeneID (NCBI):

5430

UNIPROT ID:

P24928

Full Name:

polymerase (RNA) II (DNA directed) polypeptide A, 220kDa

Calculated MW:

1970 aa, 217 kDa

Observed MW:

270 kDa

Purification Method:

Protein A purification

CloneNo.:

241914E5

Recommended Dilutions:

WB 1:5000-1:50000

Applications

Tested Applications:

WB, FC (Intra), ELISA

Species Specificity:

human

Positive Controls:

WB : HeLa cells, λ phosphatase treated HeLa cells

Background Information

RNA Pol II consists of 12 subunits and is responsible for the expression of mRNA and lincRNA genes within cells. The subunits of RNA polymerases have been shown to play specific roles in Pol II CTD dephosphorylation, tissue-specific transcription, mRNA decay, and translation. Pol II transcription involves initiation through recruitment and CTD serine 5 phosphorylation, elongation with CTD serine 2 phosphorylation, and termination. (PMID: 38842922)

Storage

Storage:

Store at -20°C. Stable for one year after shipment.

Storage Buffer:

PBS with 0.02% sodium azide and 50% glycerol pH 7.3.

Aliquoting is unnecessary for -20°C storage

*** 20ul sizes contain 0.1% BSA

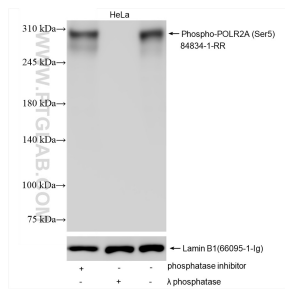
For technical support and original validation data for this product please contact:

T: 1 (888) 4PTGLAB (1-888-478-4522) (toll free in USA), or 1(312) 455-8498 (outside USA)

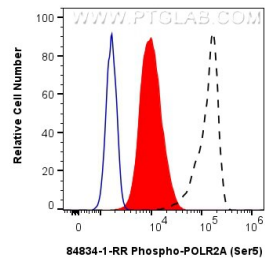
E: proteintech@ptglab.com
W: ptglab.com

This product is exclusively available under Proteintech Group brand and is not available to purchase from any other manufacturer.

Selected Validation Data



Non-treated HeLa cells, phosphatase inhibitor treated HeLa cells and λ phosphatase treated HeLa cells were subjected to SDS PAGE followed by western blot with 84834-1-RR (Phospho-POLR2A (Ser5) antibody) at dilution of 1:10000 incubated at room temperature for 1.5 hours. The membrane was stripped and re-blotted with Lamin B1 (66095-1-Ig) antibody as a loading control.



1X10⁶ HeLa cells untreated (dashed lines) or treated with λ phosphatase which intracellularly stained with 0.13 ug Phospho-POLR2A (Ser5) Recombinant antibody (84834-1-RR, Clone:241914E5) and Coralite®488-Conjugated Goat Anti-Rabbit IgG(H+L) (SA00013-2)(red), or 0.13 ug Rabbit IgG Isotype Control RecAb (98136-1-RR, Clone: 240953C9) (blue). Cells were fixed with 4% PFA and permeabilized with 90% MeOH.