

For Research Use Only

SMC2 Recombinant antibody, PBS Only

Catalog Number: 84835-2-PBS



Basic Information

Catalog Number:

84835-2-PBS

Size:

100ug , Concentration: 1 mg/ml by Nanodrop;

Source:

Rabbit

Isotype:

IgG

Immunogen Catalog Number:

AG33471

GenBank Accession Number:

NM_001042550.1

GeneID (NCBI):

10592

UNIPROT ID:

O95347

Full Name:

structural maintenance of chromosomes 2

Calculated MW:

136 kDa

Observed MW:

135-140 kDa

Purification Method:

Protein A purification

CloneNo.:

241536E1

Applications

Tested Applications:

WB, Indirect ELISA

Species Specificity:

human, mouse

Background Information

SMC2 is a central component of the condensin complex, a complex required for conversion of interphase chromatin into mitotic-like condense chromosomes. The condensin complex probably introduces positive supercoils into relaxed DNA in the presence of type I topoisomerases and converts nicked DNA into positive knotted forms in the presence of type II topoisomerases (PMID: 11136719).

Storage

Storage:

Store at -80°C.

Storage Buffer:

PBS Only

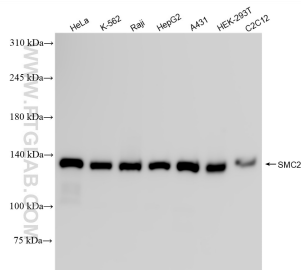
For technical support and original validation data for this product please contact:

T: 1 (888) 4PTGLAB (1-888-478-4522) (toll free in USA), or 1(312) 455-8498 (outside USA)

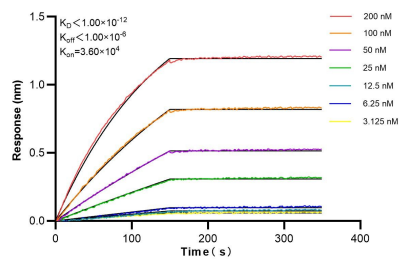
E: proteintech@ptglab.com
W: ptglab.com

This product is exclusively available under Proteintech Group brand and is not available to purchase from any other manufacturer.

Selected Validation Data



Various lysates were subjected to SDS PAGE followed by western blot with 84835-2-RR (SMC2 antibody) at dilution of 1:10000 incubated at room temperature for 1.5 hours. This data was developed using the same antibody clone with 84835-2-PBS in a different storage buffer formulation.



Biolayer interferometry (BLI) kinetic assays of 84835-2-RR against Human SMC2 were performed. The affinity constant is below 1 pM.