

For Research Use Only

# SMC2 Recombinant antibody

Catalog Number: 84835-2-RR



## Basic Information

Catalog Number:

84835-2-RR

Size:

100ul, Concentration: 1000 µg/ml by Nanodrop;

Source:

Rabbit

Isotype:

IgG

Immunogen Catalog Number:

AG33471

GenBank Accession Number:

NM\_001042550.1

GeneID (NCBI):

10592

UNIPROT ID:

O95347

Full Name:

structural maintenance of chromosomes 2

Calculated MW:

136 kDa

Observed MW:

135-140 kDa

Purification Method:

Protein A purification

CloneNo.:

241536E1

Recommended Dilutions:

WB 1:5000-1:50000

## Applications

Tested Applications:

WB, ELISA

Species Specificity:

human, mouse

Positive Controls:

WB : HeLa cells, K-562 cells, Raji cells, HepG2 cells, A431 cells, HEK-293T cells, C2C12 cells

## Background Information

SMC2 is a central component of the condensin complex, a complex required for conversion of interphase chromatin into mitotic-like condense chromosomes. The condensin complex probably introduces positive supercoils into relaxed DNA in the presence of type I topoisomerases and converts nicked DNA into positive knotted forms in the presence of type II topoisomerases (PMID: 11136719).

## Storage

Storage:

Store at -20°C. Stable for one year after shipment.

Storage Buffer:

PBS with 0.02% sodium azide and 50% glycerol pH 7.3.

Aliquoting is unnecessary for -20°C storage

\*\*\* 20ul sizes contain 0.1% BSA

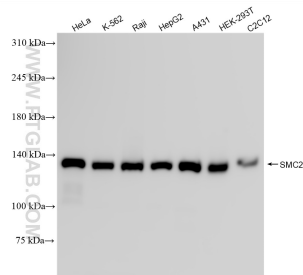
For technical support and original validation data for this product please contact:

T: 1 (888) 4PTGLAB (1-888-478-4522) (toll free in USA), or 1(312) 455-8498 (outside USA)

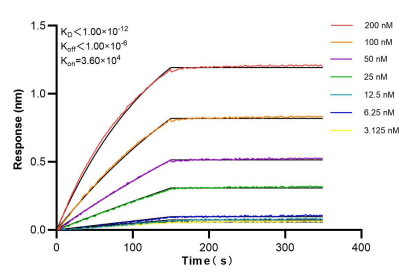
E: [proteintech@ptglab.com](mailto:proteintech@ptglab.com)  
W: [ptglab.com](http://ptglab.com)

This product is exclusively available under Proteintech Group brand and is not available to purchase from any other manufacturer.

## Selected Validation Data



Various lysates were subjected to SDS PAGE followed by western blot with 84835-2-RR (SMC2 antibody) at dilution of 1:10000 incubated at room temperature for 1.5 hours.



Biolayer interferometry (BLI) kinetic assays of 84835-2-RR against Human SMC2 were performed. The affinity constant is below 1 pM.