

For Research Use Only

# SLC10A3 Recombinant antibody

Catalog Number: 84843-1-RR



## Basic Information

<b>Catalog Number:</b> 84843-1-RR	<b>GenBank Accession Number:</b> BC004966	<b>Purification Method:</b> Protein A purification
<b>Size:</b> 100ul , Concentration: 1000 µg/ml by Nanodrop;	<b>GeneID (NCBI):</b> 8273	<b>CloneNo.:</b> 241478A8
<b>Source:</b> Rabbit	<b>UNIPROT ID:</b> P09131	<b>Recommended Dilutions:</b> WB 1:1000-1:4000
<b>Isotype:</b> IgG	<b>Full Name:</b> solute carrier family 10 (sodium/bile acid cotransporter family), member 3	
<b>Immunogen Catalog Number:</b> AG13915	<b>Calculated MW:</b> 477 aa, 50 kDa	
	<b>Observed MW:</b> 50 kDa	

## Applications

<b>Tested Applications:</b> WB, ELISA	<b>Positive Controls:</b> WB : pig liver tissue,
<b>Species Specificity:</b> human, pig	

## Background Information

The solute carrier (SLC) family 10 (SLC10) encodes protein for transporters of various agents, bile acids and steroidal hormones, and SLC01A3 belongs to the SLC10 family. SLC10A3 consists of 477 amino acids, with a calculated mass of approximately 50 kDa.

## Storage

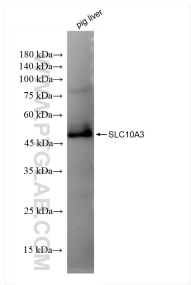
**Storage:**  
Store at -20°C. Stable for one year after shipment.  
**Storage Buffer:**  
PBS with 0.02% sodium azide and 50% glycerol pH 7.3.  
**Aliquoting is unnecessary for -20°C storage**

\*\*\* 20ul sizes contain 0.1% BSA

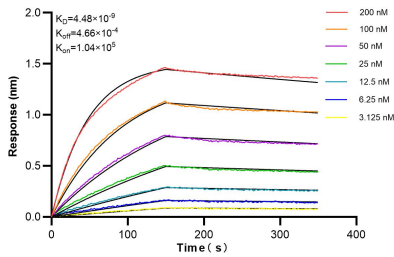
For technical support and original validation data for this product please contact:  
T: 1 (888) 4PTGLAB (1-888-478-4522) (toll free in USA), or 1(312) 455-8498 (outside USA)  
E: [proteintech@ptglab.com](mailto:proteintech@ptglab.com)  
W: [ptglab.com](http://ptglab.com)

This product is exclusively available under Proteintech Group brand and is not available to purchase from any other manufacturer.

# Selected Validation Data



pig liver tissue were subjected to SDS PAGE followed by western blot with 84843-1-RR (SLC10A3 antibody) at dilution of 1:2000 incubated at room temperature for 1.5 hours.



Biolayer interferometry (BLI) kinetic assays of 84843-1-RR against Human SLC10A3 were performed. The affinity constant is 4.48 nM.