

For Research Use Only

NUAK2 Recombinant antibody, PBS Only (Capture)

Catalog Number: 84849-2-PBS



Basic Information

Catalog Number: 84849-2-PBS	GenBank Accession Number: NM_030952	Purification Method: Protein A purification
Size: 100ug , Concentration: 1 mg/ml by Nanodrop;	GeneID (NCBI): 81788	CloneNo.: 242220B3
Source: Rabbit	UNIPROT ID: Q9H093	
Isotype: IgG	Full Name: NUAK family, SNF1-like kinase, 2	
Immunogen Catalog Number: AG35302	Calculated MW: 70kDa	

Applications

Tested Applications:
Cytometric bead array, Sandwich ELISA, Indirect ELISA, Sample test

Species Specificity:
human

Product Information

84849-2-PBS targets NUAK2 as part of a matched antibody pair:

MP01626-2: 84849-2-PBS capture and 84849-3-PBS detection (validated in Cytometric bead array)

MP01626-3: 84849-2-PBS capture and 84849-4-PBS detection (validated in Sandwich ELISA)

Unconjugated rabbit recombinant monoclonal antibody in PBS only (BSA and azide free) storage buffer at a concentration of 1 mg/mL, ready for conjugation. Created using Proteintech's proprietary in-house recombinant technology. Recombinant production enables unrivalled batch-to-batch consistency, easy scale-up, and future security of supply.

This conjugation ready format makes antibodies ideal for use in many applications including: ELISAs, multiplex assays requiring matched pairs, mass cytometry, and multiplex imaging applications. Antibody use should be optimized by the end user for each application and assay.

Storage

Storage:
Store at -80°C.
Storage Buffer:
PBS Only

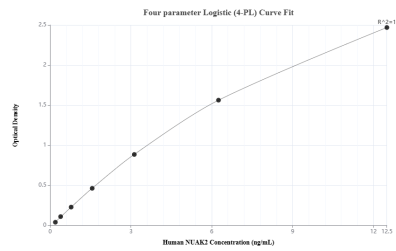
For technical support and original validation data for this product please contact:

T: 1 (888) 4PTGLAB (1-888-478-4522) (toll free in USA), or 1(312) 455-8498 (outside USA)

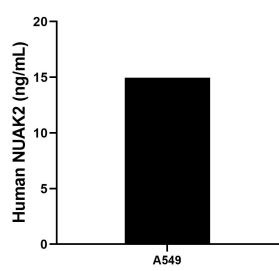
E: proteintech@ptglab.com
W: ptglab.com

This product is exclusively available under Proteintech Group brand and is not available to purchase from any other manufacturer.

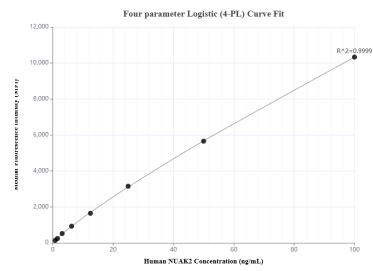
Selected Validation Data



Sandwich ELISA standard curve of MP01626-3, Human NUA2 Recombinant Matched Antibody Pair - PBS only. 84849-2-PBS was coated to a plate as the capture antibody and incubated with serial dilutions of standard Ag35302. 84849-4-PBS was HRP conjugated as the detection antibody. Range: 0.195-12.5 ng/mL



The mean NUA2 concentration was determined to be 14.95 ng/mL in A549 cell extract based on a 2.3 mg/mL extract load.



Cytometric bead array standard curve of MP01626-2, NUA2 Recombinant Matched Antibody Pair, PBS Only. Capture antibody: 84849-2-PBS. Detection antibody: 84849-3-PBS. Standard: Ag35302. Range: 0.781-100 ng/mL