

For Research Use Only

Complement factor D Recombinant antibody, PBS Only (Detector)

Catalog Number: 84851-4-PBS



Basic Information

Catalog Number: 84851-4-PBS	GenBank Accession Number: NM_001928.3	Purification Method: Protein A purification
Size: 100ug , Concentration: 1 mg/ml by Nanodrop;	GeneID (NCBI): 1675	CloneNo.: 242244C2
Source: Rabbit	UNIPROT ID: P00746	
Isotype: IgG	Full Name: complement factor D (adipsin)	
	Calculated MW: 27kDa	
	Observed MW: 27 kDa	

Applications

Tested Applications:
WB, IHC, Sandwich ELISA, Indirect ELISA, Sample test

Species Specificity:
human, mouse

Product Information

84851-4-PBS targets Complement factor D as part of a matched antibody pair:

MP01660-3: 84851-2-PBS capture and 84851-4-PBS detection (validated in Sandwich ELISA)

Unconjugated rabbit recombinant monoclonal antibody in PBS only (BSA and azide free) storage buffer at a concentration of 1 mg/mL, ready for conjugation. Created using Proteintech's proprietary in-house recombinant technology. Recombinant production enables unrivalled batch-to-batch consistency, easy scale-up, and future security of supply.

This conjugation ready format makes antibodies ideal for use in many applications including: ELISAs, multiplex assays requiring matched pairs, mass cytometry, and multiplex imaging applications. Antibody use should be optimized by the end user for each application and assay.

Background Information

Complement factor D, also known as adipsin, is a highly specific serine protease. Complement factor D is the rate-limiting enzyme in the alternative pathway of complement. It activates C3 convertase by cleaving factor B, which is a key step in the alternative pathway. Complement factor D catalyzes the cleavage of factor B to generate Ba (non-catalytic chain) and Bb (active catalytic subunit), which together with C3(H2O) (or C3b) constitute the active C3 convertase C3(H2O)Bb (or C3bBb). (PMID: 34566967; PMID: 27775713).

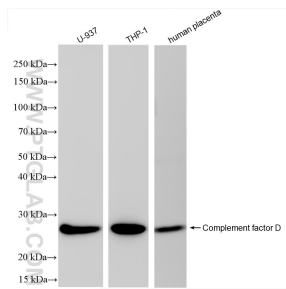
Storage

Storage:
Store at -80°C.
Storage Buffer:
PBS Only

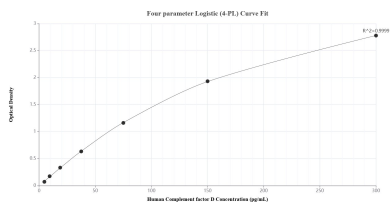
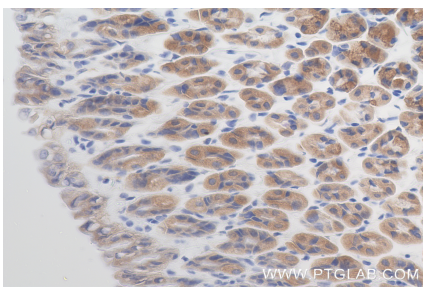
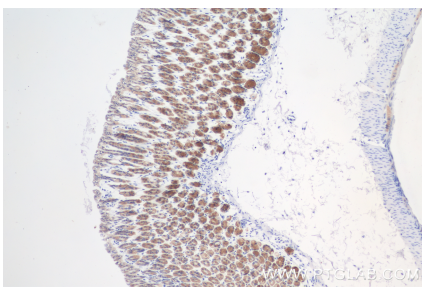
For technical support and original validation data for this product please contact:
T: 1 (888) 4PTGLAB (1-888-478-4522) (toll free in USA), or 1(312) 455-8498 (outside USA)
E: proteintech@ptglab.com
W: ptglab.com

This product is exclusively available under Proteintech Group brand and is not available to purchase from any other manufacturer.

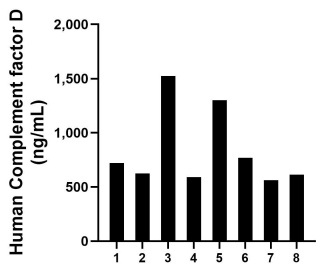
Selected Validation Data



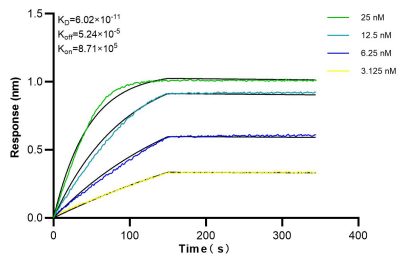
Various lysates were subjected to SDS PAGE followed by western blot with 84851-4-RR (Complement factor D antibody) at dilution of 1:8000 incubated at room temperature for 1.5 hours. This data was developed using the same antibody clone with 84851-4-PBS in a different storage buffer formulation.



Sandwich ELISA standard curve of MP01660-3, Human Complement factor D Recombinant Matched Antibody Pair - PBS only. 84851-2-PBS was coated to a plate as the capture antibody and incubated with serial dilutions of standard Eg1189. 84851-4-PBS was HRP conjugated as the detection antibody. Range: 4.69-300 pg/mL.



Serum of eight individual healthy human donors was measured. The Complement factor D concentration of detected samples was determined to be 838.5 ng/mL with a range of 561.9-1525.4 ng/mL.



Bi-layer interferometry (BLI) kinetic assays of 84851-4-RR against Human Complement factor D were performed. The affinity constant is 60.2 pM.