

For Research Use Only

Complement factor D Recombinant antibody

Catalog Number: 84851-4-RR



Basic Information

Catalog Number: 84851-4-RR	GenBank Accession Number: NM_001928.3	Purification Method: Protein A purification
Size: 100ul , Concentration: 1000 µg/ml by Nanodrop;	GeneID (NCBI): 1675	CloneNo.: 242244C2
Source: Rabbit	UNIPROT ID: P00746	Recommended Dilutions: WB 1:2000-1:16000 IHC 1:400-1:1600
Isotype: IgG	Full Name: complement factor D (adipsin)	
	Calculated MW: 27kDa	
	Observed MW: 27 kDa	

Applications

Tested Applications: WB, IHC, ELISA	Positive Controls:
Species Specificity: human, mouse	WB : U-937 cells, THP-1 cells, human placenta tissue
Note-IHC: suggested antigen retrieval with TE buffer pH 9.0; (*) Alternatively, antigen retrieval may be performed with citrate buffer pH 6.0	IHC : mouse stomach tissue,

Background Information

Complement factor D, also known as adipsin, is a highly specific serine protease. Complement factor D is the rate-limiting enzyme in the alternative pathway of complement. It activates C3 convertase by cleaving factor B, which is a key step in the alternative pathway. Complement factor D catalyzes the cleavage of factor B to generate Ba (non-catalytic chain) and Bb (active catalytic subunit), which together with C3(H₂O) (or C3b) constitute the active C3 convertase C3(H₂O)Bb (or C3bBb). (PMID: 34566967; PMID: 27775713).

Storage

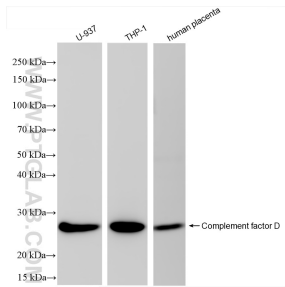
Storage:
Store at -20°C. Stable for one year after shipment.
Storage Buffer:
PBS with 0.02% sodium azide and 50% glycerol pH 7.3.
Aliquoting is unnecessary for -20°C storage

*** 20ul sizes contain 0.1% BSA

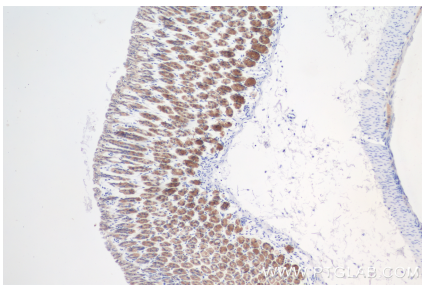
For technical support and original validation data for this product please contact:
T: 1 (888) 4PTGLAB (1-888-478-4522) (toll free in USA), or 1(312) 455-8498 (outside USA)
E: proteintech@ptglab.com
W: ptglab.com

This product is exclusively available under Proteintech Group brand and is not available to purchase from any other manufacturer.

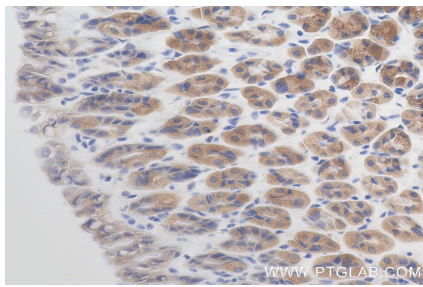
Selected Validation Data



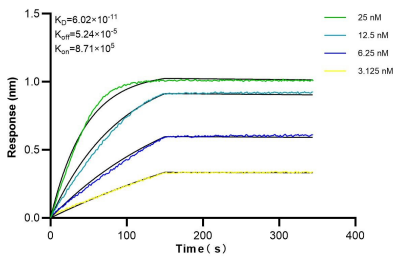
Various lysates were subjected to SDS PAGE followed by western blot with 84851-4-RR (Complement factor D antibody) at dilution of 1:8000 incubated at room temperature for 1.5 hours.



Immunohistochemical analysis of paraffin-embedded mouse stomach tissue slide using 84851-4-RR (Complement factor D antibody) at dilution of 1:800 (under 10x lens). Heat mediated antigen retrieval with Tris-EDTA buffer (pH 9.0).



Immunohistochemical analysis of paraffin-embedded mouse stomach tissue slide using 84851-4-RR (Complement factor D antibody) at dilution of 1:800 (under 40x lens). Heat mediated antigen retrieval with Tris-EDTA buffer (pH 9.0).



Biolayer interferometry (BLI) kinetic assays of 84851-4-RR against Human Complement factor D were performed. The affinity constant is 60.2 pM.