

For Research Use Only

# SUSD2 Recombinant antibody

Catalog Number: 84852-4-RR



## Basic Information

Catalog Number:

84852-4-RR

Size:

100ul, Concentration: 1000 µg/ml by Nanodrop;

Source:

Rabbit

Isotype:

IgG

GenBank Accession Number:

NM\_019601.3

GeneID (NCBI):

56241

UNIPROT ID:

Q9UGT4

Full Name:

sushi domain containing 2

Calculated MW:

90 kDa

Observed MW:

60 kDa, 90 kDa, 110 kDa

Purification Method:

Protein A purification

CloneNo.:

242328A8

Recommended Dilutions:

WB 1:5000-1:50000

## Applications

Tested Applications:

WB, ELISA

Species Specificity:

human

Positive Controls:

WB : SK-BR-3 cells, human placenta tissue

## Background Information

Sushi domain containing 2 (SUSD2) is a type I transmembrane protein that contains a somatomedin B, AMOP, von Willebrand factor type D and Sushi domains, which are frequently found in molecules associated with cell-cell and cell-matrix adhesion. SUSD2 is composed of 822 amino acids with a predicted molecular weight of 90.4 kDa (PMID: 31387209). Three specific SUSD2 bands were present, the glycosylated, full-length protein (~110 kDa), ~90 kDa band represents full-length SUSD2 with minimal glycosylation, and a strong ~60 kDa band, represents a cleaved product of SUSD2 at the GD-PH sequence in the endoplasmic reticulum (PMID:27775699, 32595828).

## Storage

Storage:

Store at -20°C. Stable for one year after shipment.

Storage Buffer:

PBS with 0.02% sodium azide and 50% glycerol pH 7.3.

Aliquoting is unnecessary for -20°C storage

\*\*\* 20ul sizes contain 0.1% BSA

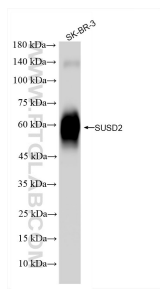
For technical support and original validation data for this product please contact:

T: 1 (888) 4PTGLAB (1-888-478-4522) (toll free in USA), or 1(312) 455-8498 (outside USA)

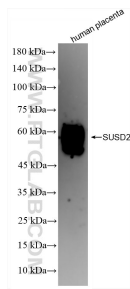
E: [proteintech@ptglab.com](mailto:proteintech@ptglab.com)  
W: [ptglab.com](http://ptglab.com)

This product is exclusively available under Proteintech Group brand and is not available to purchase from any other manufacturer.

## Selected Validation Data



SK-BR-3 cells were subjected to SDS PAGE followed by western blot with 84852-4-RR (SUS D2 antibody) at dilution of 1:10000 incubated at room temperature for 1.5 hours.



human placenta tissue were subjected to SDS PAGE followed by western blot with 84852-4-RR (SUS D2 antibody) at dilution of 1:10000 incubated at room temperature for 1.5 hours.