

For Research Use Only

SLC3A1 Recombinant antibody

Catalog Number: 84856-2-RR



Basic Information

Catalog Number:

84856-2-RR

Size:

100ul , Concentration: 1000 µg/ml by Nanodrop;

Source:

Rabbit

Isotype:

IgG

Immunogen Catalog Number:

AG9525

GenBank Accession Number:

BC022386

GeneID (NCBI):

6519

UNIPROT ID:

Q07837

Full Name:

solute carrier family 3 (cystine, dibasic and neutral amino acid transporters, activator of cystine, dibasic and neutral amino acid transport), member 1

Calculated MW:

685 aa, 79 kDa

Observed MW:

78-90 kDa

Purification Method:

Protein A purification

CloneNo.:

242370D3

Recommended Dilutions:

WB 1:5000-1:50000

Applications

Tested Applications:

WB, ELISA

Species Specificity:

human, mouse, rat

Positive Controls:

WB : rat kidney tissue, mouse kidney tissue

Background Information

SLC3A1(Neutral and basic amino acid transport protein rBAT) is also named as NBAT,D2h,RBAT. It is involved in the high-affinity, sodium-independent transport of cystine and neutral and dibasic amino acids (system B(0,+)-like activity).SLC3A1 can be degraded, at least in part, via the endoplasmic reticulum-associated degradation (ERAD) pathway(PMID:18332091). SLC3A1 has different isoforms vary from 79 kDa to 36kDa and the 85 kDa glycosylated protein can be detected in SDS-PAGE. (PMID:11546643)

Storage

Storage:

Store at -20°C. Stable for one year after shipment.

Storage Buffer:

PBS with 0.02% sodium azide and 50% glycerol pH 7.3.

Aliquoting is unnecessary for -20°C storage

*** 20ul sizes contain 0.1% BSA

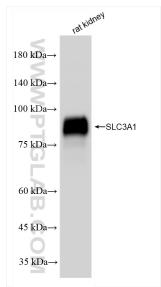
For technical support and original validation data for this product please contact:

T: 1 (888) 4PTGLAB (1-888-478-4522) (toll free in USA), or 1(312) 455-8498 (outside USA)

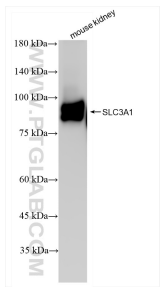
E: proteintech@ptglab.com
W: ptglab.com

This product is exclusively available under Proteintech Group brand and is not available to purchase from any other manufacturer.

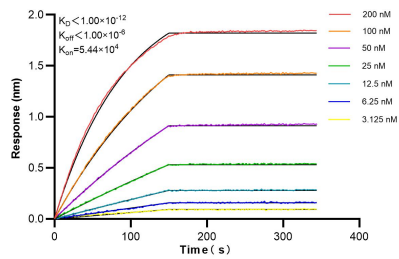
Selected Validation Data



rat kidney tissue were subjected to SDS PAGE followed by western blot with 84856-2-RR (SLC3A1 antibody) at dilution of 1:10000 incubated at room temperature for 1.5 hours.



mouse kidney tissue were subjected to SDS PAGE followed by western blot with 84856-2-RR (SLC3A1 antibody) at dilution of 1:10000 incubated at room temperature for 1.5 hours.



Biolayer interferometry (BLI) kinetic assays of 84856-2-RR against Human SLC3A1 were performed. The affinity constant is below 1 pM.