

For Research Use Only

ICAM-2/CD102 Recombinant antibody

Catalog Number: 84857-2-RR



Basic Information

Catalog Number: 84857-2-RR	GenBank Accession Number: NM_001099789.2	Purification Method: Protein A purification
Size: 100ul , Concentration: 1000 ug/ml by Nanodrop;	GeneID (NCBI): 3384	CloneNo.: 242237F8
Source: Rabbit	UNIPROT ID: P13598	Recommended Dilutions: IF/ICC 1:200-1:800
Isotype: IgG	Full Name: intercellular adhesion molecule 2	
	Calculated MW: 31kDa	

Applications

Tested Applications: IF/ICC, ELISA	Positive Controls: IF/ICC : HUVEC cells,
Species Specificity: human	

Background Information

ICAM2 is a cell adhesion protein having important roles in cell migration, especially during inflammation when leukocytes cross the endothelium. Initially described as a receptor for lymphocyte function-associated antigen-1 (LFA1), ICAM2 may play a role in lymphocyte recirculation by blocking LFA-1-dependent cell adhesion. It mediates adhesive interactions important for antigen-specific immune response, NK-cell mediated clearance, lymphocyte recirculation, and other cellular interactions important for immune response and surveillance. ICAM2 has six N-linked glycosylation sites at amino acids (asparagines) 47, 82, 105, 153, 178 and 187.

Storage

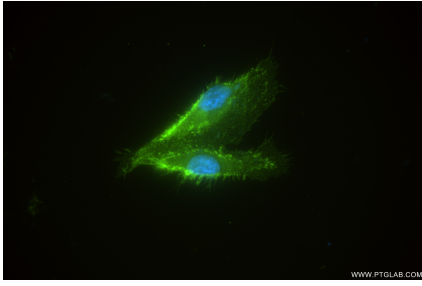
Storage:
Store at -20°C. Stable for one year after shipment.
Storage Buffer:
PBS with 0.02% sodium azide and 50% glycerol pH 7.3.
Aliquoting is unnecessary for -20°C storage

*** 20ul sizes contain 0.1% BSA

For technical support and original validation data for this product please contact:
T: 1 (888) 4PTGLAB (1-888-478-4522) (toll free in USA), or 1(312) 455-8498 (outside USA)
E: proteintech@ptglab.com
W: ptglab.com

This product is exclusively available under Proteintech Group brand and is not available to purchase from any other manufacturer.

Selected Validation Data



Immunofluorescent analysis of (4% PFA) fixed HUVEC cells using ICAM-2/CD102 antibody (84857-2-RR, Clone: 242237F8) at dilution of 1:400 and CoraLite®488-Conjugated Goat Anti-Rabbit IgG(H+L) (SA00013-2).