

For Research Use Only

CENPF Recombinant antibody, PBS Only

Catalog Number: 84865-4-PBS



Basic Information

Catalog Number: 84865-4-PBS	GenBank Accession Number: NM_016343	Purification Method: Protein A purification
Size: 100ug , Concentration: 1 mg/ml by Nanodrop;	GeneID (NCBI): 1063	CloneNo.: 242277G9
Source: Rabbit	UNIPROT ID: P49454	
Isotype: IgG	Full Name: centromere protein F, 350/400ka (mitosin)	
Immunogen Catalog Number: AG29665	Calculated MW: 368 kDa	

Applications

Tested Applications:
IF/ICC, Indirect ELISA

Species Specificity:
human

Background Information

CENPF, also named as mitosin and centromere protein F (PMID: 22912832), belongs to centromere protein F family. During the cell cycle, CENPF localizes in multiple cellular structures including the nuclear envelope in late G2/early prophase and kinetochores throughout mitosis (PMID: 30198378). CENPF is required for kinetochore function and chromosome segregation in mitosis and required for kinetochore localization of dynein, LIS1, NDE1 and NDEL1 (PMID: 17600710)(PMID: 7542657). It regulates recycling of the plasma membrane by acting as a link between recycling vesicles and the microtubule network through its association with STX4 and SNAP25. Acts as a potential inhibitor of pocket protein-mediated cellular processes during development by regulating the activity of RB proteins during cell division and proliferation (PMID: 26125848). The calculated molecular weight of CENPF is ~358 kDa and CENPF can be detected as ~367 kDa (PMID: 7542657).

Storage

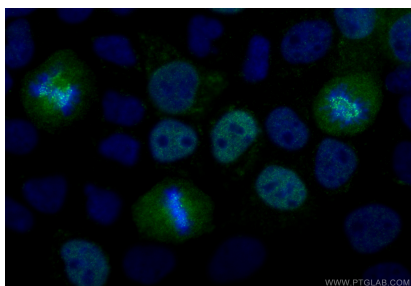
Storage:
Store at -80°C.

Storage Buffer:
PBS only, pH7.3

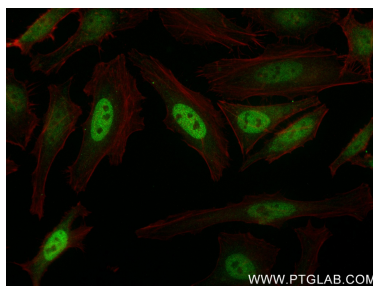
For technical support and original validation data for this product please contact:
T: 1 (888) 4PTGLAB (1-888-478-4522) (toll free in USA), or 1(312) 455-8498 (outside USA)
E: proteintech@ptglab.com
W: ptglab.com

This product is exclusively available under Proteintech Group brand and is not available to purchase from any other manufacturer.

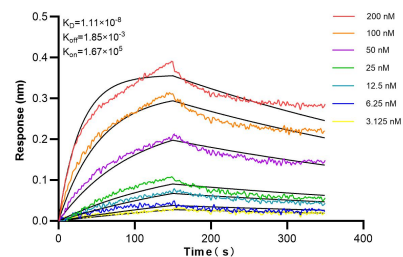
Selected Validation Data



Immunofluorescent analysis of (4% PFA) fixed A431 cells using CENPF antibody (84865-4-RR, Clone: 242277G9) at dilution of 1:500 and CoraLite®488-Conjugated Goat Anti-Rabbit IgG(H+L) (SA00013-2). This data was developed using the same antibody clone with 84865-4-PBS in a different storage buffer formulation.



Immunofluorescent analysis of (4% PFA) fixed HeLa cells using CENPF antibody (84865-4-RR, Clone: 242277G9) at dilution of 1:500 and CoraLite®488-Conjugated Goat Anti-Rabbit IgG(H+L) (SA00013-2), CL594-Phalloidin (red). This data was developed using the same antibody clone with 84865-4-PBS in a different storage buffer formulation.



Biolayer interferometry (BLI) kinetic assays of 84865-4-RR against Human CENPF were performed. The affinity constant is 11.1 nM.