

For Research Use Only

# CENPF Recombinant antibody

Catalog Number: 84865-4-RR



## Basic Information

<b>Catalog Number:</b> 84865-4-RR	<b>GenBank Accession Number:</b> NM_016343	<b>Purification Method:</b> Protein A purification
<b>Size:</b> 100ul , Concentration: 1000 µg/ml by Nanodrop;	<b>GeneID (NCBI):</b> 1063	<b>CloneNo.:</b> 242277G9
<b>Source:</b> Rabbit	<b>UNIPROT ID:</b> P49454	<b>Recommended Dilutions:</b> IF/ICC 1:250-1:1000
<b>Isotype:</b> IgG	<b>Full Name:</b> centromere protein F, 350/400ka (mitosin)	
<b>Immunogen Catalog Number:</b> AG29665	<b>Calculated MW:</b> 368 kDa	

## Applications

<b>Tested Applications:</b> IF/ICC, ELISA	<b>Positive Controls:</b> IF/ICC : HeLa cells, A431 cells
<b>Species Specificity:</b> human	

## Background Information

CENPF, also named as mitosin and centromere protein F (PMID: 22912832), belongs to centromere protein F family. During the cell cycle, CENPF localizes in multiple cellular structures including the nuclear envelope in late G2/early prophase and kinetochores throughout mitosis (PMID: 30198378). CENPF is required for kinetochore function and chromosome segregation in mitosis and required for kinetochore localization of dynein, LIS1, NDE1 and NDEL1 (PMID: 17600710)(PMID: 7542657). It regulates recycling of the plasma membrane by acting as a link between recycling vesicles and the microtubule network through its association with STX4 and SNAP25. Acts as a potential inhibitor of pocket protein-mediated cellular processes during development by regulating the activity of RB proteins during cell division and proliferation (PMID: 26125848). The calculated molecular weight of CENPF is ~358 kDa and CENPF can be detected as ~367 kDa (PMID: 7542657).

## Storage

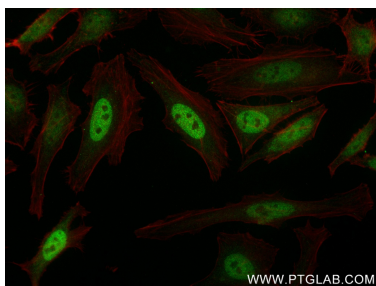
**Storage:**  
Store at -20°C. Stable for one year after shipment.  
**Storage Buffer:**  
PBS with 0.02% sodium azide and 50% glycerol, pH7.3  
**Aliquoting is unnecessary for -20°C storage**

\*\*\* 20ul sizes contain 0.1% BSA

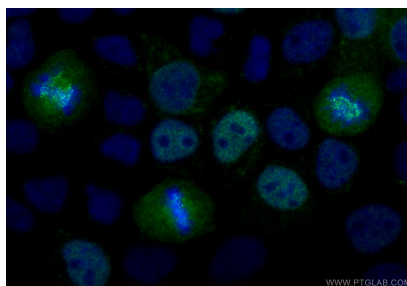
For technical support and original validation data for this product please contact:  
T: 1 (888) 4PTGLAB (1-888-478-4522) (toll free in USA), or 1(312) 455-8498 (outside USA)  
E: [proteintech@ptglab.com](mailto:proteintech@ptglab.com)  
W: [ptglab.com](http://ptglab.com)

This product is exclusively available under Proteintech Group brand and is not available to purchase from any other manufacturer.

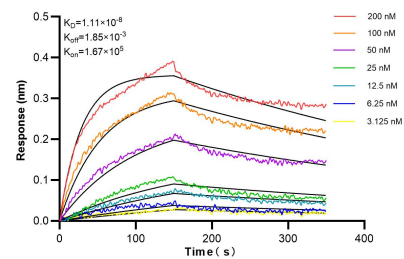
## Selected Validation Data



Immunofluorescent analysis of (4% PFA) fixed HeLa cells using CENPF antibody (84865-4-RR, Clone: 242277G9) at dilution of 1:500 and CoraLite@488-Conjugated Goat Anti-Rabbit IgG(H+L) (SA00013-2), CL594-Phalloidin (red).



Immunofluorescent analysis of (4% PFA) fixed A431 cells using CENPF antibody (84865-4-RR, Clone: 242277G9) at dilution of 1:500 and CoraLite@488-Conjugated Goat Anti-Rabbit IgG(H+L) (SA00013-2).



Biolayer interferometry (BLI) kinetic assays of 84865-4-RR against Human CENPF were performed. The affinity constant is 11.1 nM.