

For Research Use Only

# PISD Recombinant antibody

Catalog Number: 84866-2-RR



## Basic Information

<b>Catalog Number:</b> 84866-2-RR	<b>GenBank Accession Number:</b> BC001482	<b>Purification Method:</b> Protein A purification
<b>Size:</b> 100ul , Concentration: 1000 µg/ml by Nanodrop;	<b>GeneID (NCBI):</b> 23761	<b>CloneNo.:</b> 242280C9
<b>Source:</b> Rabbit	<b>UNIPROT ID:</b> Q9UG56	<b>Recommended Dilutions:</b> WB 1:500-1:2000
<b>Isotype:</b> IgG	<b>Full Name:</b> phosphatidylserine decarboxylase	
<b>Immunogen Catalog Number:</b> AG9499	<b>Calculated MW:</b> 375aa,43 kDa; 408aa,46 kDa	
	<b>Observed MW:</b> 46 kDa	

## Applications

<b>Tested Applications:</b> WB, ELISA	<b>Positive Controls:</b> WB : L02 cells, HSC-T6 cells, HEK-293 cells
<b>Species Specificity:</b> human, rat	

## Background Information

PISD(Phosphatidylserine decarboxylase proenzyme) belongs to the phosphatidylserine decarboxylase family. It contains a conserved LGST motif that functions as an autocatalytic cleavage site where the proenzyme is split into mature alpha and beta subunits. It has 2 isoforms produced by alternative splicing.

## Storage

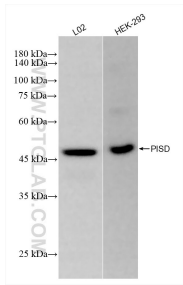
**Storage:**  
Store at -20°C. Stable for one year after shipment.  
**Storage Buffer:**  
PBS with 0.02% sodium azide and 50% glycerol pH 7.3.  
Aliquoting is unnecessary for -20°C storage

\*\*\* 20ul sizes contain 0.1% BSA

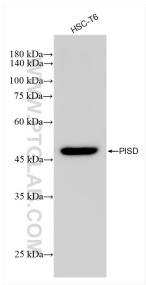
For technical support and original validation data for this product please contact:  
T: 1 (888) 4PTGLAB (1-888-478-4522) (toll free in USA), or 1(312) 455-8498 (outside USA)  
E: [proteintech@ptglab.com](mailto:proteintech@ptglab.com)  
W: [ptglab.com](http://ptglab.com)

This product is exclusively available under Proteintech Group brand and is not available to purchase from any other manufacturer.

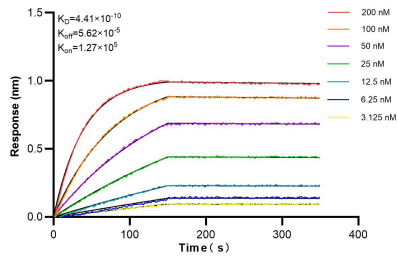
Selected Validation Data



Various lysates were subjected to SDS PAGE followed by western blot with 84866-2-RR (PSD antibody) at dilution of 1:1000 incubated at room temperature for 1.5 hours.



Various lysates were subjected to SDS PAGE followed by western blot with 84866-2-RR (PSD antibody) at dilution of 1:1000 incubated at room temperature for 1.5 hours.



Biolayer interferometry (BLI) kinetic assays of 84866-2-RR against Human PSD were performed. The affinity constant is 0.441 nM.