

For Research Use Only

# PDE10A Recombinant antibody

Catalog Number: 84869-1-RR



## Basic Information

<b>Catalog Number:</b> 84869-1-RR	<b>GenBank Accession Number:</b> BC104860	<b>Purification Method:</b> Protein A purification
<b>Size:</b> 100ul , Concentration: 1000 µg/ml by Nanodrop;	<b>GeneID (NCBI):</b> 10846	<b>CloneNo.:</b> 242357E12
<b>Source:</b> Rabbit	<b>UNIPROT ID:</b> Q9Y233	<b>Recommended Dilutions:</b> WB 1:2000-1:10000
<b>Isotype:</b> IgG	<b>Full Name:</b> phosphodiesterase 10A	
<b>Immunogen Catalog Number:</b> AG12771	<b>Calculated MW:</b> 779 aa, 88 kDa	
	<b>Observed MW:</b> 80 kDa	

## Applications

<b>Tested Applications:</b> WB, FC (Intra), ELISA	<b>Positive Controls:</b> WB : mouse brain tissue, rat brain tissue
<b>Species Specificity:</b> human, mouse, rat	

## Background Information

PDE10A (Phosphodiesterase 10A) is a single member of the PDE10 protein family, and it catalyzes both cAMP and cGMP hydrolysis (PMID: 34550322). The literature on PDE10A has been focused on psychiatric and neurological disorders because PDE10A expression is enriched in the striatal region of the brain under normal conditions (PMID: 12967715). Moreover, PDE10A expression is induced in various human tumor cell lines and PDE10A inhibition suppresses tumor cell growth (PMID: 37232184).

## Storage

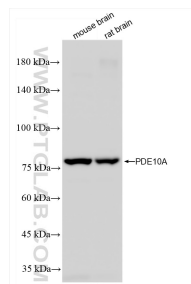
**Storage:**  
Store at -20°C. Stable for one year after shipment.  
**Storage Buffer:**  
PBS with 0.02% sodium azide and 50% glycerol pH 7.3.  
Aliquoting is unnecessary for -20°C storage

\*\*\* 20ul sizes contain 0.1% BSA

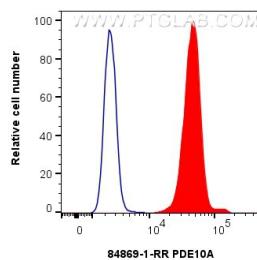
For technical support and original validation data for this product please contact:  
T: 1 (888) 4PTGLAB (1-888-478-4522) (toll free in USA), or 1(312) 455-8498 (outside USA)  
E: proteintech@ptglab.com  
W: ptglab.com

This product is exclusively available under Proteintech Group brand and is not available to purchase from any other manufacturer.

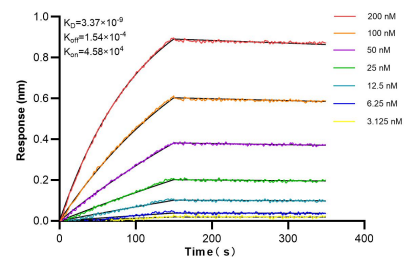
## Selected Validation Data



Various lysates were subjected to SDS PAGE followed by western blot with 84869-1-RR (PDE10A antibody) at dilution of 1:5000 incubated at room temperature for 1.5 hours.



$1 \times 10^6$  HeLa cells were intracellularly stained with 0.25  $\mu$ g PDE10A Recombinant antibody (84869-1-RR, Clone:242357E12) and CoraLite®488-Conjugated Goat Anti-Rabbit IgG(H+L) (SA00013-2) (red), or 0.25  $\mu$ g Rabbit IgG Isotype Control RecAb (98136-1-RR, Clone: 240953C9) (blue). Cells were fixed with 4% PFA and permeabilized with Flow Cytometry Perm Buffer (PF00011-C).



Biolayer interferometry (BLI) kinetic assays of 84869-1-RR against Human PDE10A were performed. The affinity constant is 3.37 nM.