

For Research Use Only

# PPIL6 Recombinant antibody, PBS Only

Catalog Number: 84870-4-PBS



## Basic Information

Catalog Number:

84870-4-PBS

Size:

100ug , Concentration: 1 mg/ml by Nanodrop;

Source:

Rabbit

Isotype:

IgG

Immunogen Catalog Number:

AG11578

GenBank Accession Number:

BC038716

GeneID (NCBI):

285755

UNIPROT ID:

Q8IXY8

Full Name:

peptidylprolyl isomerase (cyclophilin)-like 6

Calculated MW:

311 aa, 35 kDa

Purification Method:

Protein A purification

CloneNo.:

242321G10

## Applications

Tested Applications:

IF/ICC, Indirect ELISA

Species Specificity:

human

## Storage

Storage:

Store at -80°C.

Storage Buffer:

PBS Only

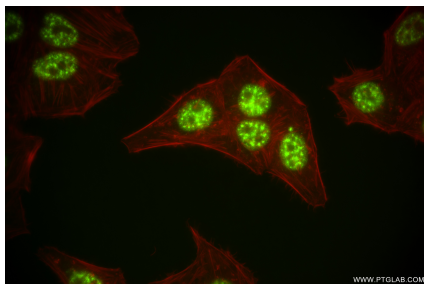
For technical support and original validation data for this product please contact:

T: 1 (888) 4PTGLAB (1-888-478-4522) (toll free in USA), or 1(312) 455-8498 (outside USA)

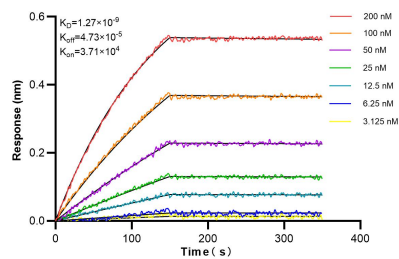
E: [proteintech@ptglab.com](mailto:proteintech@ptglab.com)  
W: [ptglab.com](http://ptglab.com)

This product is exclusively available under Proteintech Group brand and is not available to purchase from any other manufacturer.

## Selected Validation Data



Immunofluorescent analysis of (4% PFA) fixed HepG2 cells using PPIL6 antibody (84870-4-RR, Clone: 242321G10) at dilution of 1:500 and CoraLite®488-Conjugated Goat Anti-Rabbit IgG(H+L) (SA00013-2), CLS94-Phalloidin (red). This data was developed using the same antibody clone with 84870-4-PBS in a different storage buffer formulation.



Biolayer interferometry (BLI) kinetic assays of 84870-4-RR against Human PPIL6 were performed. The affinity constant is 1.27 nM.