

For Research Use Only

PPIL6 Recombinant antibody

Catalog Number: 84870-4-RR



Basic Information

Catalog Number:

84870-4-RR

Size:

100ul , Concentration: 1000 ug/ml by Nanodrop;

Source:

Rabbit

Isotype:

IgG

Immunogen Catalog Number:

AG11578

GenBank Accession Number:

BC038716

GeneID (NCBI):

285755

UNIPROT ID:

Q8IXY8

Full Name:

peptidylprolyl isomerase (cyclophilin)-like 6

Calculated MW:

311 aa, 35 kDa

Purification Method:

Protein A purification

CloneNo.:

242321G10

Recommended Dilutions:

IF/ICC 1:250-1:1000

Applications

Tested Applications:

IF/ICC, ELISA

Species Specificity:

human

Positive Controls:

IF/ICC : HepG2 cells,

Storage

Storage:

Store at -20°C. Stable for one year after shipment.

Storage Buffer:

PBS with 0.02% sodium azide and 50% glycerol pH 7.3.

Aliquoting is unnecessary for -20°C storage

*** 20ul sizes contain 0.1% BSA

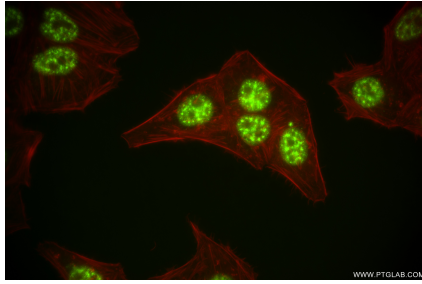
For technical support and original validation data for this product please contact:

T: 1 (888) 4PTGLAB (1-888-478-4522) (toll free in USA), or 1(312) 455-8498 (outside USA)

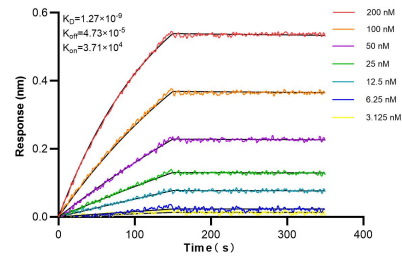
E: proteintech@ptglab.com
W: ptglab.com

This product is exclusively available under Proteintech Group brand and is not available to purchase from any other manufacturer.

Selected Validation Data



Immunofluorescent analysis of (4% PFA) fixed HepG2 cells using PPIL6 antibody (84870-4-RR, Clone: 242321G10) at dilution of 1:500 and CoraLite®488-Conjugated Goat Anti-Rabbit IgG(H+L) (SA00013-2), CLS94-Phalloidin (red).



Biolayer interferometry (BLI) kinetic assays of 84870-4-RR against Human PPIL6 were performed. The affinity constant is 1.27 nM.