

For Research Use Only

ARRDC1 Recombinant antibody

Catalog Number: 84874-5-RR



Basic Information

Catalog Number: 84874-5-RR	GenBank Accession Number: BC032346	Purification Method: Protein A purification
Size: 100ul , Concentration: 1000 µg/ml by Nanodrop;	GeneID (NCBI): 92714	CloneNo.: 242396A5
Source: Rabbit	UNIPROT ID: Q8N5I2	Recommended Dilutions: WB 1:2000-1:10000
Isotype: IgG	Full Name: arrestin domain containing 1	
Immunogen Catalog Number: AG15341	Calculated MW: 433 aa, 46 kDa	
	Observed MW: 46-50 kDa	

Applications

Tested Applications: WB, ELISA	Positive Controls: WB : HEK-293 cells, HL-60 cells, K-562 cells, HeLa cells, HepG2 cells, A549 cells
Species Specificity: human	

Background Information

ARRDC1, or Arrestin-Domain Containing Protein 1, is a protein that plays a significant role in the formation and release of extracellular vesicles, specifically a subtype known as ARMMs (Arrestin-Domain Containing Protein 1-mediated microvesicles). ARRDC1 is localized to the cytosolic side of the plasma membrane and recruits the ESCRT-I complex protein TSG101 to initiate outward membrane budding. This protein is also involved in the regulation of protein cargo and release of extracellular vesicles, including both exosomes and ectosomes. The absence of ARRDC1 can lead to changes in the protein cargo within these vesicles, indicating its importance in the sorting and packaging process.

Storage

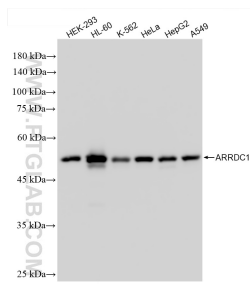
Storage:
Store at -20°C. Stable for one year after shipment.
Storage Buffer:
PBS with 0.02% sodium azide and 50% glycerol pH 7.3.
Aliquoting is unnecessary for -20°C storage

*** 20ul sizes contain 0.1% BSA

For technical support and original validation data for this product please contact:
T: 1 (888) 4PTGLAB (1-888-478-4522) (toll free in USA), or 1(312) 455-8498 (outside USA)
E: proteintech@ptglab.com
W: ptglab.com

This product is exclusively available under Proteintech Group brand and is not available to purchase from any other manufacturer.

Selected Validation Data



Various lysates were subjected to SDS PAGE followed by western blot with 84874-5-RR (ARRDC1 antibody) at dilution of 1:5000 incubated at room temperature for 1.5 hours.