

For Research Use Only

# Mouse TCB1 Recombinant antibody, PBS Only (Capture)

Catalog Number: 84878-2-PBS



## Basic Information

Catalog Number:

84878-2-PBS

Size:

100ug, Concentration: 1 mg/ml by  
Nanodrop;

Source:

Rabbit

Isotype:

IgG

GenBank Accession Number:

GeneID (NCBI):

UNIPROT ID:

P01852

Full Name:

Calculated MW:

19 kDa

Purification Method:

Protein A purification

CloneNo.:

241802D4

## Applications

Tested Applications:

Cytometric bead array, Sandwich ELISA, Indirect ELISA,  
Sample test

Species Specificity:

mouse

## Product Information

84878-2-PBS targets TCB1 as part of a matched antibody pair:

MP01642-1: 84878-2-PBS capture and 84878-1-PBS detection (validated in Cytometric bead array, Sandwich ELISA)

Unconjugated rabbit recombinant monoclonal antibody in PBS only (BSA and azide free) storage buffer at a concentration of 1 mg/mL, ready for conjugation. Created using Proteintech's proprietary in-house recombinant technology. Recombinant production enables unrivalled batch-to-batch consistency, easy scale-up, and future security of supply.

This conjugation ready format makes antibodies ideal for use in many applications including: ELISAs, multiplex assays requiring matched pairs, mass cytometry, and multiplex imaging applications. Antibody use should be optimized by the end user for each application and assay.

## Storage

Storage:

Store at -80°C.

Storage Buffer:

PBS only, pH7.3

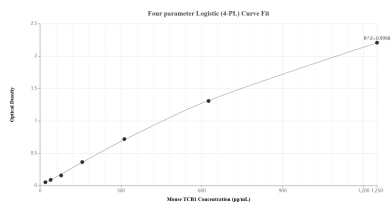
For technical support and original validation data for this product please contact:

T: 1 (888) 4PTGLAB (1-888-478-4522) (toll free  
in USA), or 1(312) 455-8498 (outside USA)

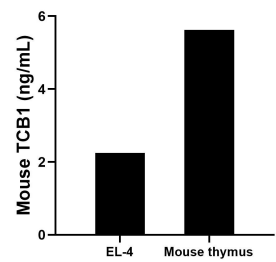
E: [proteintech@ptglab.com](mailto:proteintech@ptglab.com)  
W: [ptglab.com](http://ptglab.com)

This product is exclusively available under Proteintech Group brand and is not available to purchase from any other manufacturer.

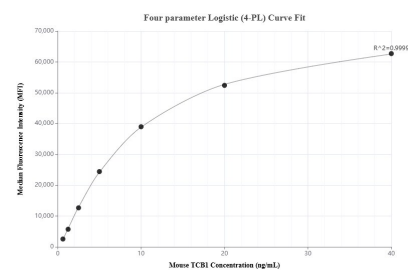
## Selected Validation Data



Sandwich ELISA standard curve of MP01642-1, Mouse TCB1 Recombinant Matched Antibody Pair - PBS only. 84878-2-PBS was coated to a plate as the capture antibody and incubated with serial dilutions of standard Eg2437. 84878-1-PBS was HRP conjugated as the detection antibody. Range: 19.5-1250 pg/mL



The mean TCB1 concentration was determined to be 2.3 ng/mL in EL-4 cell extract based on a 3.7 mg/mL extract load and 5.6 ng/mL in mouse thymus tissue extract based on a 1.3 mg/mL extract load.



Cytometric bead array standard curve of MP01642-1, MOUSE TCB1 Recombinant Matched Antibody Pair, PBS Only. Capture antibody: 84878-2-PBS. Detection antibody: 84878-1-PBS. Standard: Eg2437. Range: 0.625-40 ng/mL