

For Research Use Only

# Choline Kinase Alpha Recombinant antibody

Catalog Number: 84881-2-RR



## Basic Information

<b>Catalog Number:</b> 84881-2-RR	<b>GenBank Accession Number:</b> BC036471	<b>Purification Method:</b> Protein A purification
<b>Size:</b> 100ul , Concentration: 1000 ug/ml by Nanodrop;	<b>GeneID (NCBI):</b> 1119	<b>CloneNo.:</b> 242095B4
<b>Source:</b> Rabbit	<b>UNIPROT ID:</b> P35790	<b>Recommended Dilutions:</b> WB 1:5000-1:50000
<b>Isotype:</b> IgG	<b>Full Name:</b> choline kinase alpha	
<b>Immunogen Catalog Number:</b> AG4761	<b>Calculated MW:</b> 439 aa, 52 kDa	
	<b>Observed MW:</b> 50 kDa	

## Applications

<b>Tested Applications:</b> WB, ELISA	<b>Positive Controls:</b> WB : HepG2 cells, COLO 320 cells
<b>Species Specificity:</b> human	

## Background Information

Choline kinase alpha, also named as CHK, CKI and CK, belongs to the choline/ethanolamine kinase family. CHKa may have a regulatory role in phosphatidylcholine synthesis. CHKa catalyze the reaction: ATP + choline = ADP + O-phosphocholine. The human enzyme resembled the rat liver enzyme over the entire sequence. It also resembled the yeast enzyme in the carboxy-terminal region, but not in the amino-terminal region(PMID:1618328).And it expresses in human brain tissue but not in human skeletal muscle(PMID:21665002).It has 2 isoforms produced by alternative splicing.

## Storage

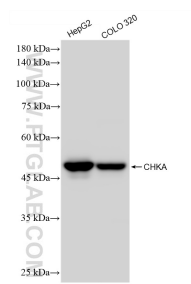
**Storage:**  
Store at -20°C. Stable for one year after shipment.  
**Storage Buffer:**  
PBS with 0.02% sodium azide and 50% glycerol pH 7.3.  
Aliquoting is unnecessary for -20°C storage

\*\*\* 20ul sizes contain 0.1% BSA

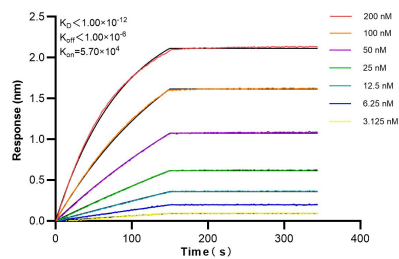
For technical support and original validation data for this product please contact:  
T: 1 (888) 4PTGLAB (1-888-478-4522) (toll free in USA), or 1(312) 455-8498 (outside USA)  
E: proteintech@ptglab.com  
W: ptglab.com

This product is exclusively available under Proteintech Group brand and is not available to purchase from any other manufacturer.

## Selected Validation Data



Various lysates were subjected to SDS PAGE followed by western blot with 84881-2-RR (CHKA antibody) at dilution of 1:10000 incubated at room temperature for 1.5 hours.



Biolayer interferometry (BLI) kinetic assays of 84881-2-RR against Human CHKA were performed. The affinity constant is below 1 pM.