

For Research Use Only

BCL3 Recombinant antibody, PBS Only (Capture/Detector)

Catalog Number: 84882-3-PBS



Basic Information

Catalog Number: 84882-3-PBS	GenBank Accession Number: BC064993	Purification Method: Protein A purification
Size: 100ug , Concentration: 1 mg/ml by Nanodrop;	GeneID (NCBI): 602	CloneNo.: 242233G12
Source: Rabbit	UNIPROT ID: P20749	
Isotype: IgG	Full Name: B-cell CLL/lymphoma 3	
Immunogen Catalog Number: AG13375	Calculated MW: 446 aa, 47 kDa	

Applications

Tested Applications:
Cytometric bead array, Sandwich ELISA, Indirect ELISA, Sample test

Species Specificity:
human

Product Information

84882-3-PBS targets BCL3 as part of a matched antibody pair:

MP01655-1: 84882-3-PBS capture and 84882-1-PBS detection (validated in Cytometric bead array)

MP01655-2: 84882-3-PBS capture and 84882-2-PBS detection (validated in Cytometric bead array)

MP01655-3: 84882-4-PBS capture and 84882-3-PBS detection (validated in Sandwich ELISA)

Unconjugated rabbit recombinant monoclonal antibody in PBS only (BSA and azide free) storage buffer at a concentration of 1 mg/mL, ready for conjugation. Created using Proteintech's proprietary in-house recombinant technology. Recombinant production enables unrivalled batch-to-batch consistency, easy scale-up, and future security of supply.

This conjugation ready format makes antibodies ideal for use in many applications including: ELISAs, multiplex assays requiring matched pairs, mass cytometry, and multiplex imaging applications. Antibody use should be optimized by the end user for each application and assay.

Storage

Storage:
Store at -80°C.
Storage Buffer:
PBS Only

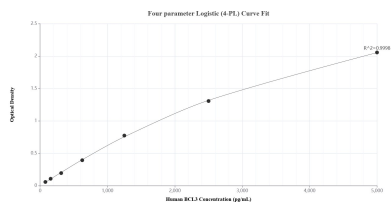
For technical support and original validation data for this product please contact:

T: 1 (888) 4PTGLAB (1-888-478-4522) (toll free in USA), or 1(312) 455-8498 (outside USA)

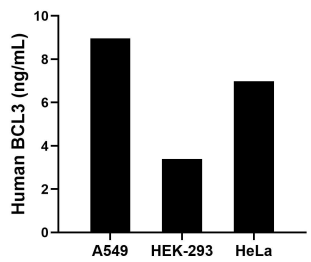
E: proteintech@ptglab.com
W: ptglab.com

This product is exclusively available under Proteintech Group brand and is not available to purchase from any other manufacturer.

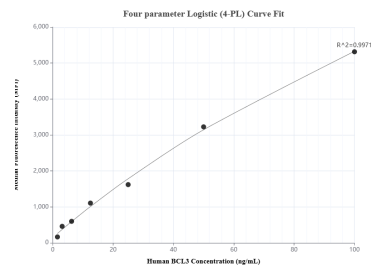
Selected Validation Data



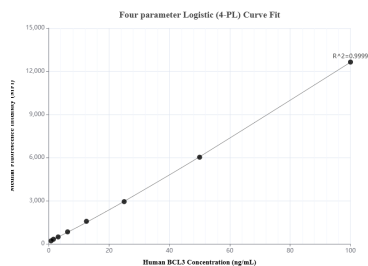
Sandwich ELISA standard curve of MP01655-3, Human BCL3 Recombinant Matched Antibody Pair - PBS only. 84882-4-PBS was coated to a plate as the capture antibody and incubated with serial dilutions of standard Ag13375. 84882-3-PBS was HRP conjugated as the detection antibody. Range: 78.1-5000 pg/mL.



The mean BCL3 concentration was determined to be 9.0 ng/mL in A549 cell extract based on a 2.3 mg/mL extract load, 3.4 ng/mL in HEK-293 cell extract based on a 2.9 mg/mL extract load and 7.0 ng/mL in HeLa cell extract based on a 1.0 mg/mL extract load.



Cytometric bead array standard curve of MP01655-2, BCL3 Recombinant Matched Antibody Pair, PBS Only. Capture antibody: 84882-3-PBS. Detection antibody: 84882-2-PBS. Standard: Ag13375. Range: 1.563-100 ng/mL.



Cytometric bead array standard curve of MP01655-1, BCL3 Recombinant Matched Antibody Pair, PBS Only. Capture antibody: 84882-3-PBS. Detection antibody: 84882-1-PBS. Standard: Ag13375. Range: 0.781-100 ng/mL.