

For Research Use Only

# Mouse Galectin-3 Recombinant antibody, PBS Only (Capture)

Catalog Number: 84889-2-PBS



## Basic Information

Catalog Number:

84889-2-PBS

Size:

100ug, Concentration: 1 mg/ml by Nanodrop;

Source:

Rabbit

Isotype:

IgG

GenBank Accession Number:

GeneID (NCBI):

16854

UNIPROT ID:

P16110

Full Name:

lectin, galactose binding, soluble 3

Calculated MW:

28kDa

Purification Method:

Protein A purification

CloneNo.:

242453E9

## Applications

Tested Applications:

Cytometric bead array, Sandwich ELISA, Indirect ELISA, Sample test

Species Specificity:

mouse

## Product Information

84889-2-PBS targets Galectin-3 as part of a matched antibody pair:

MP01641-1: 84889-2-PBS capture and 84889-3-PBS detection (validated in Cytometric bead array, Sandwich ELISA)

MP01641-2: 84889-2-PBS capture and 84889-1-PBS detection (validated in Cytometric bead array)

Unconjugated rabbit recombinant monoclonal antibody in PBS only (BSA and azide free) storage buffer at a concentration of 1 mg/mL, ready for conjugation. Created using Proteintech's proprietary in-house recombinant technology. Recombinant production enables unrivalled batch-to-batch consistency, easy scale-up, and future security of supply.

This conjugation ready format makes antibodies ideal for use in many applications including: ELISAs, multiplex assays requiring matched pairs, mass cytometry, and multiplex imaging applications. Antibody use should be optimized by the end user for each application and assay.

## Storage

Storage:

Store at -80°C.

Storage Buffer:

PBS Only

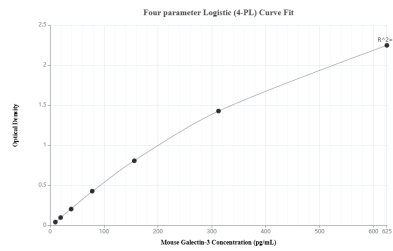
For technical support and original validation data for this product please contact:

T: 1 (888) 4PTGLAB (1-888-478-4522) (toll free in USA), or 1(312) 455-8498 (outside USA)

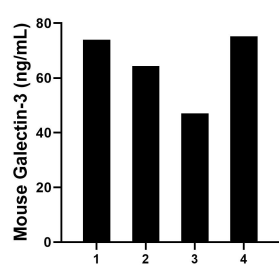
E: [proteintech@ptglab.com](mailto:proteintech@ptglab.com)  
W: [ptglab.com](http://ptglab.com)

This product is exclusively available under Proteintech Group brand and is not available to purchase from any other manufacturer.

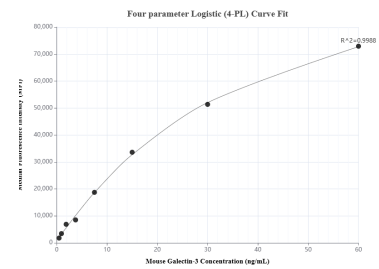
# Selected Validation Data



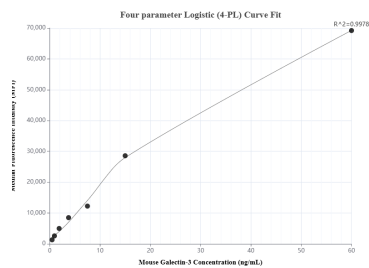
Sandwich ELISA standard curve of MP01641-1, Mouse Galectin-3 Recombinant Matched Antibody Pair - PBS only. 84889-2-PBS was coated to a plate as the capture antibody and incubated with serial dilutions of standard Eg1232. 84889-3-PBS was HRP conjugated as the detection antibody. Range: 9.77-625 pg/mL



Serum of four mice was measured. The mouse Galectin-3 concentration of detected samples was determined to be 65.14 ng/mL with a range of 47.02 - 74.00 ng/mL.



Cytometric bead array standard curve of MP01641-1, MOUSE Galectin-3 Recombinant Matched Antibody Pair, PBS Only. Capture antibody: 84889-2-PBS. Detection antibody: 84889-3-PBS. Standard: Eg1232. Range: 0.469-60 ng/mL



Cytometric bead array standard curve of MP01641-2, MOUSE Galectin-3 Recombinant Matched Antibody Pair, PBS Only. Capture antibody: 84889-2-PBS. Detection antibody: 84889-1-PBS. Standard: Eg1232. Range: 0.469-60 ng/mL