

For Research Use Only

# RFC2 Recombinant antibody, PBS Only (Capture)

Catalog Number: 84892-1-PBS



## Basic Information

<b>Catalog Number:</b> 84892-1-PBS	<b>GenBank Accession Number:</b> BC002813	<b>Purification Method:</b> Protein A purification
<b>Size:</b> 100ug , Concentration: 1 mg/ml by Nanodrop;	<b>GeneID (NCBI):</b> 5982	<b>CloneNo.:</b> 242503E12
<b>Source:</b> Rabbit	<b>UNIPROT ID:</b> P35250	
<b>Isotype:</b> IgG	<b>Full Name:</b> replication factor C (activator 1) 2, 40kDa	
<b>Immunogen Catalog Number:</b> AG0663	<b>Calculated MW:</b> 39 kDa	
	<b>Observed MW:</b> 39 kDa	

## Applications

**Tested Applications:**  
WB, IHC, IF/ICC, FC (Intra), Cytometric bead array, Sandwich ELISA, Indirect ELISA, Sample test

**Species Specificity:**  
human, mouse, rat

## Product Information

84892-1-PBS targets RFC2 as part of a matched antibody pair.

MP01625-2: 84892-1-PBS capture and 84892-2-PBS detection (validated in Cytometric bead array, Sandwich ELISA)

Unconjugated rabbit recombinant monoclonal antibody in PBS only (BSA and azide free) storage buffer at a concentration of 1 mg/mL, ready for conjugation. Created using Proteintech's proprietary in-house recombinant technology. Recombinant production enables unrivalled batch-to-batch consistency, easy scale-up, and future security of supply.

This conjugation ready format makes antibodies ideal for use in many applications including: ELISAs, multiplex assays requiring matched pairs, mass cytometry, and multiplex imaging applications. Antibody use should be optimized by the end user for each application and assay.

## Background Information

RFC2, also named RFC40, belongs to the activator 1 small subunits family. It is a 39 kDa Activator 1 subunit. It binds ATP. The elongation of primed DNA templates by DNA polymerase delta and epsilon requires the action of the accessory proteins proliferating cell nuclear antigen (PCNA) and activator 1. RFC2 is a constitutively expressed protein essential for both DNA repair and replication. (PMID: 20660762).

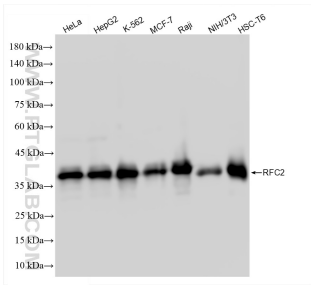
## Storage

**Storage:**  
Store at -80°C.  
**Storage Buffer:**  
PBS Only

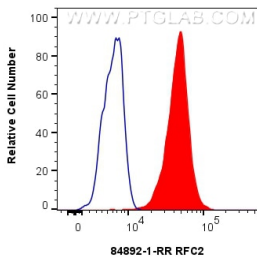
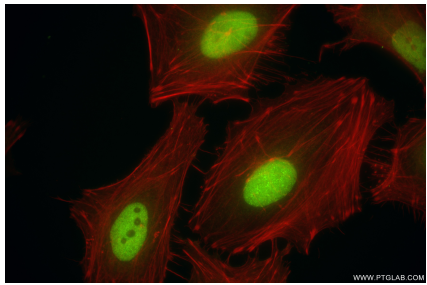
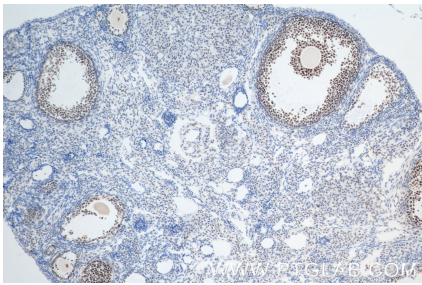
For technical support and original validation data for this product please contact:  
T: 1 (888) 4PTGLAB (1-888-478-4522) (toll free in USA), or 1(312) 455-8498 (outside USA)  
E: [proteintech@ptglab.com](mailto:proteintech@ptglab.com)  
W: [ptglab.com](http://ptglab.com)

This product is exclusively available under Proteintech Group brand and is not available to purchase from any other manufacturer.

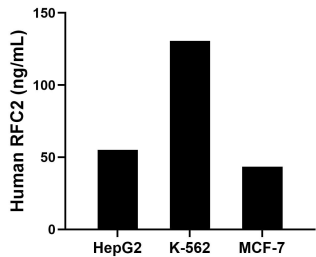
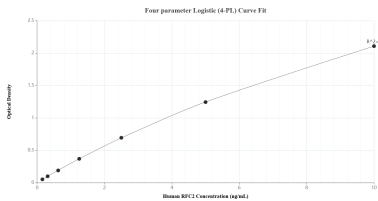
Selected Validation Data



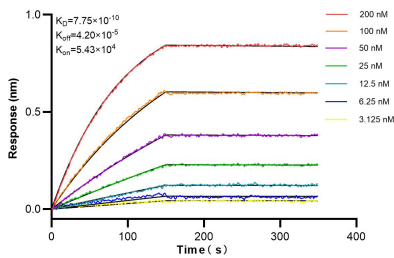
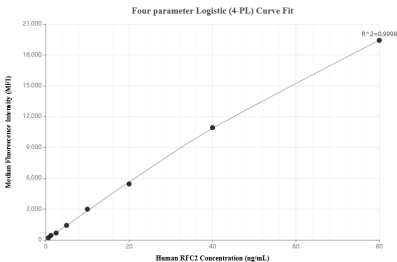
Various lysates were subjected to SDS PAGE followed by western blot with 84892-1-RR (RFC2 antibody) at dilution of 1:10000 incubated at room temperature for 1.5 hours. This data was developed using the same antibody clone with 84892-1-PBS in a different storage buffer formulation.



1x10<sup>6</sup> HeLa cells were intracellularly stained with 0.25 ug RFC2 Recombinant antibody (84892-1-RR, Clone:242503E12) and CoraLite®488-Conjugated Goat Anti-Rabbit IgG(H+L) (SA00013-2)(red), or 0.25 ug Rabbit IgG Isotype Control RecAb (98136-1-RR, Clone: 240953C9) (blue). Cells were fixed and permeabilized with Transcription Factor Staining Buffer Kit (PF00011). This data was developed using the same antibody clone with 84892-1-PBS in a



The mean RFC2 concentration was determined to be 55.11 ng/mL in HepG2 cell extract based on a 1.00 mg/mL extract load, 130.72 ng/mL in K-562 cell extract based on a 2.40 mg/mL extract load and 43.49 ng/mL in MCF-7 cell extract based on a 1.20 mg/mL extract load.



Cytometric bead array standard curve of MP01625-2, RFC2 Recombinant Matched Antibody Pair, PBS Only. Capture antibody: 84892-1-PBS. Detection antibody: 84892-2-PBS. Standard: Ag0663. Range: 0.625-80 ng/mL

Biolayer interferometry (BLI) kinetic assays of 84892-1-RR against Human RFC2 were performed. The affinity constant is 0.775 nM.