

For Research Use Only

PMS2 Recombinant antibody, PBS Only

Catalog Number: 84894-5-PBS



Basic Information

Catalog Number: 84894-5-PBS	GenBank Accession Number: BC093921	Purification Method: Protein A purification
Size: 100ug , Concentration: 1 mg/ml by Nanodrop;	GeneID (NCBI): 5395	CloneNo.: 242455F8
Source: Rabbit	UNIPROT ID: P54278	
Isotype: IgG	Full Name: PMS2 postmeiotic segregation increased 2 (S. cerevisiae)	
Immunogen Catalog Number: AG33508	Calculated MW: 862 aa, 96 kDa	
	Observed MW: 117 kDa	

Applications

Tested Applications:
WB, IHC, FC (Intra), Indirect ELISA

Species Specificity:
human

Background Information

PMS2, also named as PMSL2, belongs to the DNA mismatch repair mutL/hexB family. It is a component of the post-replicative DNA mismatch repair system (MMR). It heterodimerizes with MLH1 to form MutL alpha. MutL alpha (MLH1-PMS2) interacts physically with the clamp loader subunits of DNA polymerase III, suggesting that it may play a role to recruit the DNA polymerase III to the site of the MMR. It also implicated in DNA damage signaling, a process which induces cell cycle arrest and can lead to apoptosis in case of major DNA damages. (PMID: 16873062, PMID: 18206974) Defects in PMS2 are the cause of hereditary non-polyposis colorectal cancer type 4 (HNPCC4). Defects in PMS2 are a cause of mismatch repair cancer syndrome (MMRCS).

Storage

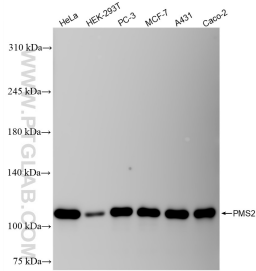
Storage:
Store at -80°C.

Storage Buffer:
PBS Only

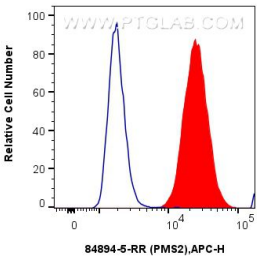
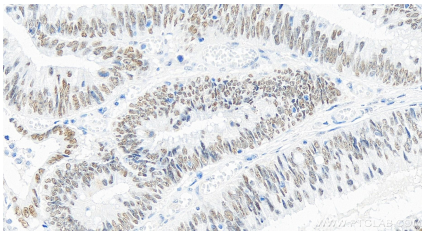
For technical support and original validation data for this product please contact:
T: 1 (888) 4PTGLAB (1-888-478-4522) (toll free in USA), or 1(312) 455-8498 (outside USA)
E: proteintech@ptglab.com
W: ptglab.com

This product is exclusively available under Proteintech Group brand and is not available to purchase from any other manufacturer.

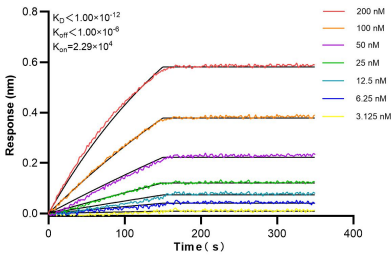
Selected Validation Data



Various lysates were subjected to SDS PAGE followed by western blot with 84894-5-RR (PMS2 antibody) at dilution of 1:5000 incubated at room temperature for 1.5 hours. This data was developed using the same antibody clone with 84894-5-PBS in a different storage buffer formulation.



1x10⁶ MCF-7 cells were intracellularly stained with 0.25 ug PMS2 Recombinant antibody (84894-5-RR, Clone:24245F8) and APC-Conjugated Goat Anti-Rabbit IgG(H+L) (red), or 0.25 ug Rabbit IgG Isotype Control Recombinant Antibody (98136-1-RR, Clone: 240953C9) (blue). Cells were fixed and permeabilized with True-Nuclear Transcription Factor Buffer Set. This data was developed using the same antibody clone with 84894-5-PBS in a different storage



Biolayer interferometry (BLI) kinetic assays of 84894-5-RR against Human PMS2 were performed. The affinity constant is below 1 pM.