

For Research Use Only

CD16a Recombinant antibody, PBS Only (Capture/Detector)

Catalog Number: 84897-2-PBS



Basic Information

Catalog Number: 84897-2-PBS	GenBank Accession Number: GeneID (NCBI): 2214	Purification Method: Protein A purification
Size: 100ug , Concentration: 1 mg/ml by Nanodrop;	ENSEMBL Gene ID: ENSG00000203747	CloneNo.: 242426E9
Source: Rabbit	Full Name: Fc fragment of IgG, low affinity IIIa, receptor (CD16a)	
Isotype: IgG		

Applications

Tested Applications:
Cytometric bead array, Sandwich ELISA, Indirect ELISA,
Sample test

Species Specificity:
human

Product Information

84897-2-PBS targets CD16a as part of a matched antibody pair:

MP01617-1: 84897-1-PBS capture and 84897-2-PBS detection (validated in Cytometric bead array)

MP01617-2: 84897-2-PBS capture and 84897-3-PBS detection (validated in Cytometric bead array)

MP01617-3: 84897-2-PBS capture and 84897-4-PBS detection (validated in Sandwich ELISA)

Unconjugated rabbit recombinant monoclonal antibody in PBS only (BSA and azide free) storage buffer at a concentration of 1 mg/mL, ready for conjugation. Created using Proteintech's proprietary in-house recombinant technology. Recombinant production enables unrivalled batch-to-batch consistency, easy scale-up, and future security of supply.

This conjugation ready format makes antibodies ideal for use in many applications including: ELISAs, multiplex assays requiring matched pairs, mass cytometry, and multiplex imaging applications. Antibody use should be optimized by the end user for each application and assay.

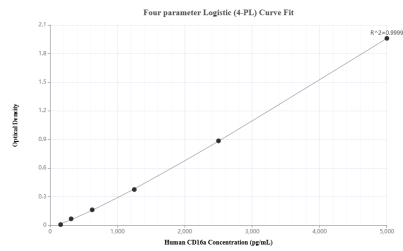
Storage

Storage:
Store at -80°C.
Storage Buffer:
PBS Only

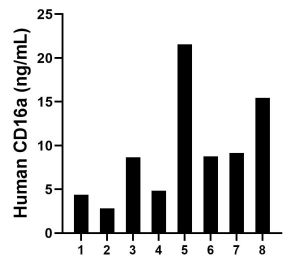
For technical support and original validation data for this product please contact:
T: 1 (888) 4PTGLAB (1-888-478-4522) (toll free in USA), or 1(312) 455-8498 (outside USA)
E: proteintech@ptglab.com
W: ptglab.com

This product is exclusively available under Proteintech Group brand and is not available to purchase from any other manufacturer.

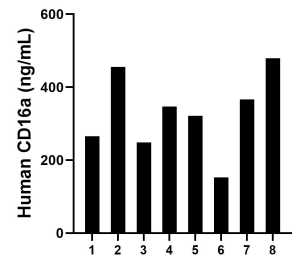
Selected Validation Data



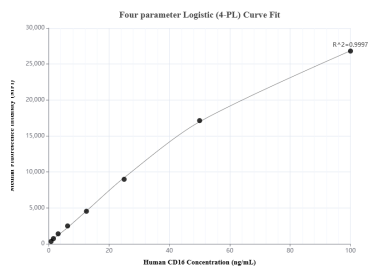
Sandwich ELISA standard curve of MP01617-3, Human CD16a Recombinant Matched Antibody Pair - PBS only. 84897-2-PBS was coated to a plate as the capture antibody and incubated with serial dilutions of standard Eg2488. 84897-4-PBS was HRP conjugated as the detection antibody. Range: 156.3-5000 pg/mL



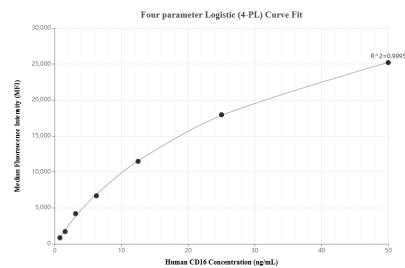
Urine of eight individual healthy human donors was measured. The human CD16a concentration of detected samples was determined to be 9.45 ng/mL with a range of 2.83 - 21.56 ng/mL.



Serum of eight individual healthy human donors was measured. The human CD16a concentration of detected samples was determined to be 329.57 ng/mL with a range of 152.51- 455.59 ng/mL.



Cytometric bead array standard curve of MP01617-2, CD16a Recombinant Matched Antibody Pair, PBS Only. Capture antibody: 84897-2-PBS. Detection antibody: 84897-3-PBS. Standard: Eg2488. Range: 0.781-100 ng/mL



Cytometric bead array standard curve of MP01617-1, CD16a Recombinant Matched Antibody Pair, PBS Only. Capture antibody: 84897-1-PBS. Detection antibody: 84897-2-PBS. Standard: Eg2488. Range: 0.781-50 ng/mL