

For Research Use Only

# LARP2 Recombinant antibody, PBS Only (Detector)

Catalog Number: 84898-3-PBS



## Basic Information

<b>Catalog Number:</b> 84898-3-PBS	<b>GenBank Accession Number:</b> BC030516	<b>Purification Method:</b> Protein A purification
<b>Size:</b> 100ug , Concentration: 1 mg/ml by Nanodrop;	<b>GeneID (NCBI):</b> 55132	<b>CloneNo.:</b> 242486E9
<b>Source:</b> Rabbit	<b>UNIPROT ID:</b> Q659C4	
<b>Isotype:</b> IgG	<b>Full Name:</b> La ribonucleoprotein domain family, member 2	
<b>Immunogen Catalog Number:</b> AG11043	<b>Calculated MW:</b> 201 aa, 24 kDa	

## Applications

**Tested Applications:**  
IHC, IF/ICC, FC (Intra), Cytometric bead array, Indirect ELISA

**Species Specificity:**  
human

## Product Information

84898-3-PBS targets LARP2 as part of a matched antibody pair:

MP01618-2: 84898-1-PBS capture and 84898-3-PBS detection (validated in Cytometric bead array)

Unconjugated rabbit recombinant monoclonal antibody in PBS only (BSA and azide free) storage buffer at a concentration of 1 mg/mL, ready for conjugation. Created using Proteintech's proprietary in-house recombinant technology. Recombinant production enables unrivalled batch-to-batch consistency, easy scale-up, and future security of supply.

This conjugation ready format makes antibodies ideal for use in many applications including: ELISAs, multiplex assays requiring matched pairs, mass cytometry, and multiplex imaging applications. Antibody use should be optimized by the end user for each application and assay.

## Storage

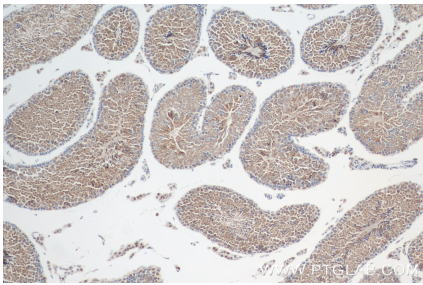
**Storage:**  
Store at -80°C.

**Storage Buffer:**  
PBS Only

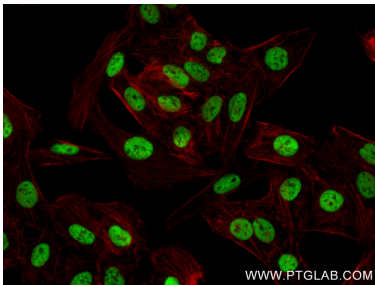
For technical support and original validation data for this product please contact:  
T: 1 (888) 4PTGLAB (1-888-478-4522) (toll free in USA), or 1(312) 455-8498 (outside USA)  
E: [proteintech@ptglab.com](mailto:proteintech@ptglab.com)  
W: [ptglab.com](http://ptglab.com)

This product is exclusively available under Proteintech Group brand and is not available to purchase from any other manufacturer.

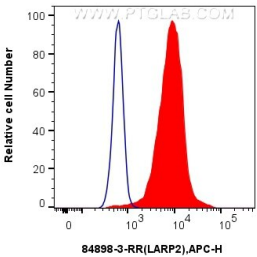
Selected Validation Data



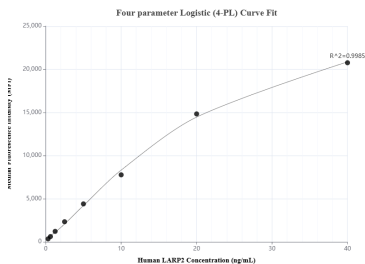
Immunohistochemical analysis of paraffin-embedded mouse testis tissue slide using 84898-3-RR (LARP2 antibody) at dilution of 1:400 (under 10x lens). Heat mediated antigen retrieval with Tris-EDTA buffer (pH 9.0). This data was developed using the same antibody clone with 84898-3-PBS in a different storage buffer formulation.



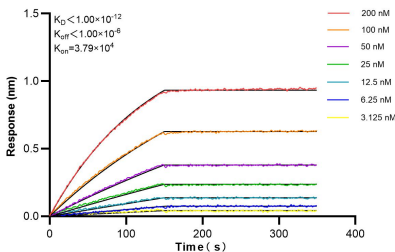
Immunofluorescent analysis of (4% PFA) fixed U2OS cells using LARP2 antibody (84898-3-RR, Clone: 242486E9 ) at dilution of 1:500 and CoraLite®488-Conjugated Goat Anti-Rabbit IgG(H+L) (SA00013-2), CL594-Phalloidin (red). This data was developed using the same antibody clone with 84898-3-PBS in a different storage buffer formulation.



1x10<sup>6</sup> HeLa cells were intracellularly stained with 0.25 ug LARP2 Recombinant antibody (84898-3-RR, Clone:242486E9) and APC-Conjugated Goat Anti-Rabbit IgG(H+L) (red), or 0.25 ug Rabbit IgG Isotype Control Recombinant Antibody (98136-1-RR, Clone: 240953C9) (blue). Cells were fixed with 4% PFA and permeabilized with Flow Cytometry Perm Buffer (PF00011-C). This data was developed using the same antibody clone with 84898-3-PBS in a different storage



Cytometric bead array standard curve of MP01618-2, LARP2 Recombinant Matched Antibody Pair, PBS Only. Capture antibody: 84898-1-PBS. Detection antibody: 84898-3-PBS. Standard: Ag11043. Range: 0.313-40 ng/mL



Biolayer interferometry (BLI) kinetic assays of 84898-3-RR against Human LARP2 were performed. The affinity constant is below 1 pM.