

For Research Use Only

# PSPH Recombinant antibody

Catalog Number: 84899-5-RR



## Basic Information

Catalog Number:

84899-5-RR

Size:

100ul, Concentration: 1000 µg/ml by

Nanodrop;

Source:

Rabbit

Isotype:

IgG

Immunogen Catalog Number:

AG5972

GenBank Accession Number:

BC063614

GeneID (NCBI):

5723

UNIPROT ID:

P78330

Full Name:

phosphoserine phosphatase

Calculated MW:

25 kDa

Observed MW:

25-28 kDa

Purification Method:

Protein A purification

CloneNo.:

242518C4

Recommended Dilutions:

WB 1:2000-1:10000

## Applications

Tested Applications:

WB, ELISA

Species Specificity:

human, mouse, rat

Positive Controls:

WB : A375 cells, MCF-7 cells, U-87 MG cells, HepG2 cells, NIH/3T3 cells, HSC-T6 cells

## Storage

Storage:

Store at -20°C. Stable for one year after shipment.

Storage Buffer:

PBS with 0.02% sodium azide and 50% glycerol pH 7.3.

Aliquoting is unnecessary for -20°C storage

\*\*\* 20ul sizes contain 0.1% BSA

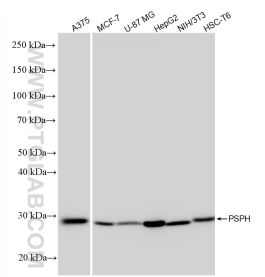
For technical support and original validation data for this product please contact:

T: 1 (888) 4PTGLAB (1-888-478-4522) (toll free in USA), or 1(312) 455-8498 (outside USA)

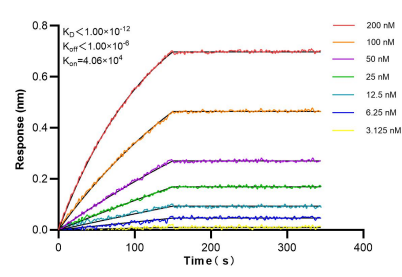
E: [proteintech@ptglab.com](mailto:proteintech@ptglab.com)  
W: [ptglab.com](http://ptglab.com)

This product is exclusively available under Proteintech Group brand and is not available to purchase from any other manufacturer.

## Selected Validation Data



Various lysates were subjected to SDS PAGE followed by western blot with 84899-5-RR (PSPH antibody) at dilution of 1:5000 incubated at room temperature for 1.5 hours.



Biolayer interferometry (BLI) kinetic assays of 84899-5-RR against Human PSPH were performed. The affinity constant is below 1 pM.