

For Research Use Only

RPL15 Recombinant antibody

Catalog Number: 84900-1-RR



Basic Information

Catalog Number: 84900-1-RR	GenBank Accession Number: BC070328	Purification Method: Protein A purification
Size: 100ul , Concentration: 1000 µg/ml by Nanodrop;	GeneID (NCBI): 6138	CloneNo.: 242029E3
Source: Rabbit	UNIPROT ID: P61313	Recommended Dilutions: WB 1:5000-1:50000
Isotype: IgG	Full Name: ribosomal protein L15	
Immunogen Catalog Number: AG9948	Calculated MW: 204 aa, 24 kDa	
	Observed MW: 27 kDa	

Applications

Tested Applications: WB, ELISA	Positive Controls: WB : HeLa cells, HepG2 cells, K-562 cells, COLO 320 cells, NCI-H1299 cells, mouse colon tissue, rat colon tissue
Species Specificity: human, mouse, rat	

Background Information

RPL15 (ribosomal protein L15) is a component of the ribosomal large subunit 60S, participating in the assembly process of ribosomal subunits and involved in the processing of rRNA. Moreover, RPL15 deletion will lead to abnormalities in the biogenesis of ribosomal subunits. The abnormal expression or mutation of RPL15 protein is also closely related to the occurrence and development of many diseases. RPL15 was highly expressed in gastric cancer cell lines, and interference with the expression of RPL15 could inhibit gastric cancer cell growth. In addition, RPL15 in skin squamous cell carcinoma tissues and pancreatic cancer cell lines decreased sharply, which had a great relationship with the survival rate. PMID:35410346

Storage

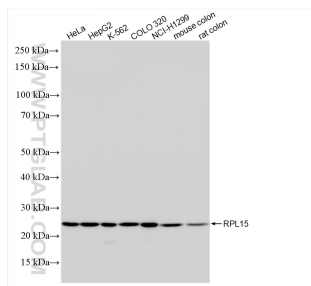
Storage:
Store at -20°C. Stable for one year after shipment.
Storage Buffer:
PBS with 0.02% sodium azide and 50% glycerol pH 7.3.
Aliquoting is unnecessary for -20°C storage

*** 20ul sizes contain 0.1% BSA

For technical support and original validation data for this product please contact:
T: 1 (888) 4PTGLAB (1-888-478-4522) (toll free in USA), or 1(312) 455-8498 (outside USA)
E: proteintech@ptglab.com
W: ptglab.com

This product is exclusively available under Proteintech Group brand and is not available to purchase from any other manufacturer.

Selected Validation Data



Various lysates were subjected to SDS PAGE followed by western blot with 84900-1-RR (RPL15 antibody) at dilution of 1:10000 incubated at room temperature for 1.5 hours.